

TFPVEN1090

MOUNTING KIT for BENDING BEAM load cells

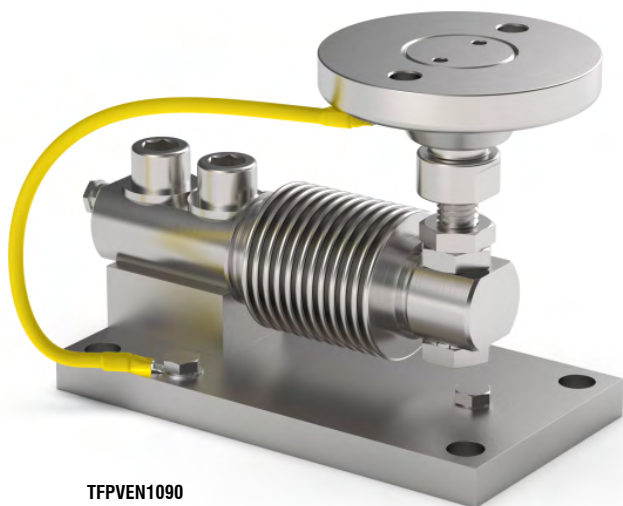
LAUMAS®

Series load cells: FCAL - FCAX

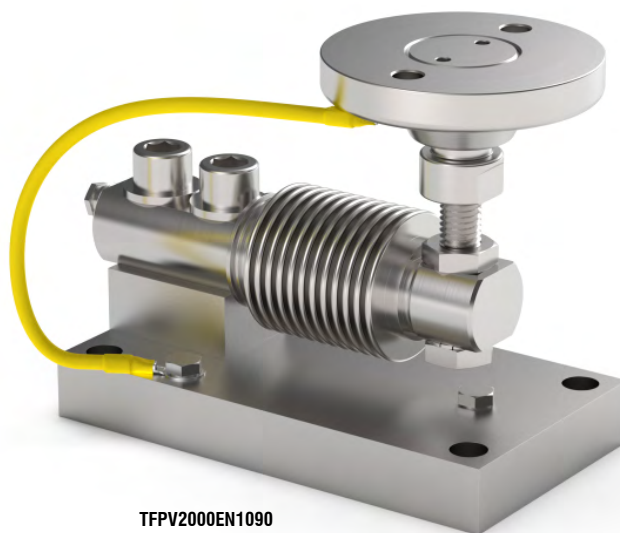


Up to 1500 kg application range

Certification EN1090



TFPVEN1090



TFPV2000EN1090

| MAX STATIC LOAD | kg | FOR LOAD CELLS | NET WEIGHT (kg) | CODE |
|-----------------|----|----------------|-----------------|----------------|
| 500 | | FCAL - FCAX | 2 | TFPVEN1090 |
| 1500 | | FCAX | 2 | TFPV2000EN1090 |

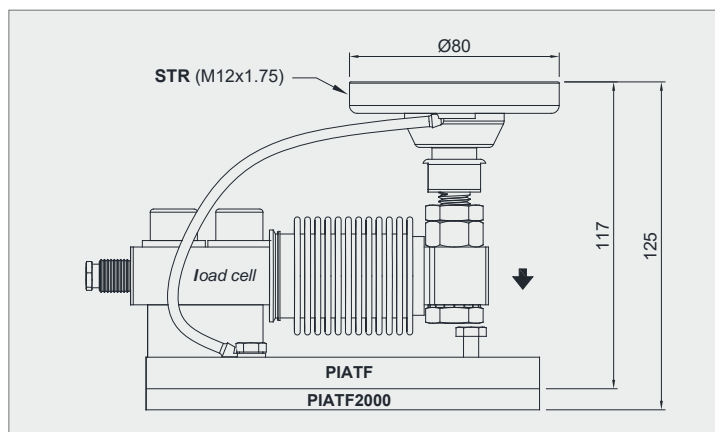
Load cell not included.

DESCRIPTION

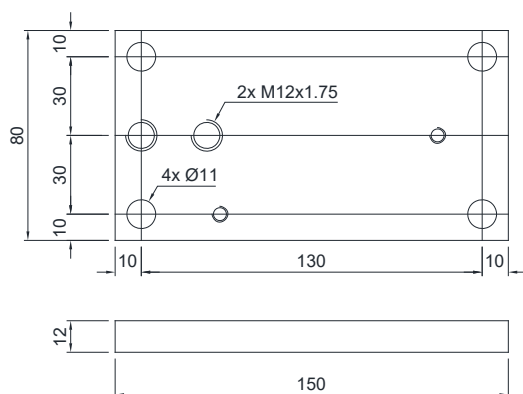
- Constraint against lateral forces and anti-tilt by AISI 304 stainless steel self-centering joint foot.
- Lower plate and block in AISI 304 stainless steel.
- Compensation for any misalignments of the support plates of the structure.
- Partial height adjustment.
- Locking screw to avoid damage during transport and installation.

DIMENSIONS AND TECHNICAL SPECIFICATIONS

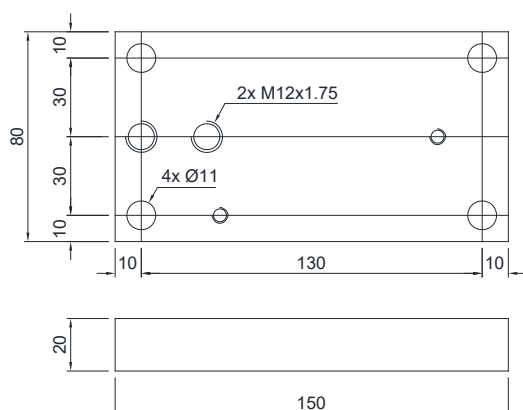
- During the transport and installation the lock (*) must touch under the load cell. After installation, move the lock away from the load cell.
- Interconnect the plates to the earthing.
- In case of structure with four-point support, if one-point does not touch the upper part of the mounting kit, you must proceed to insert a shim before fixing the bolts.



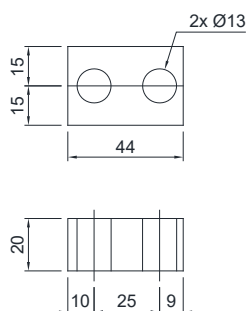
PIATF



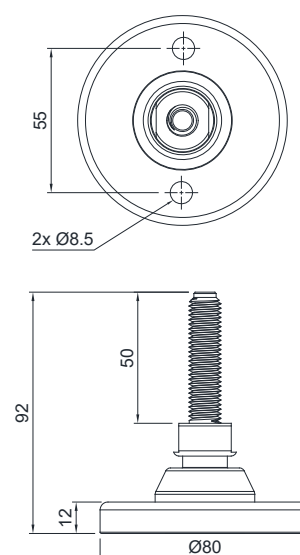
PIATF2000



BLOCT



STR
(M12x1.75)



FIXING TO THE WEIGHED STRUCTURE

