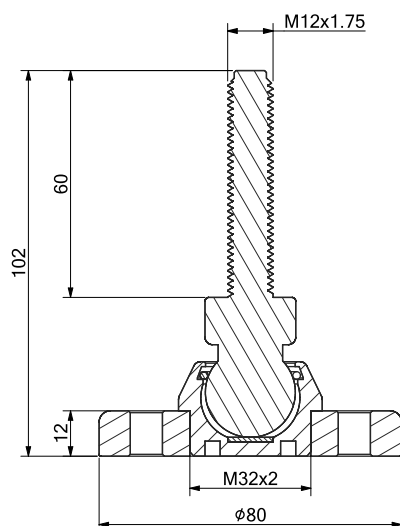
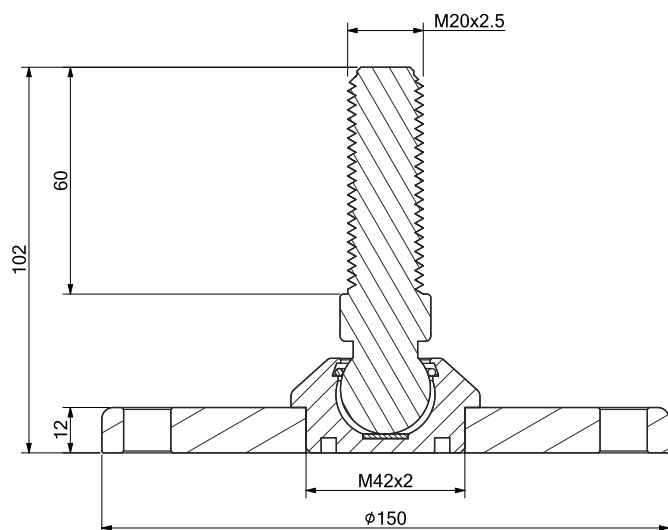


For BENDING BEAM and SHEAR BEAM load cells

Up to 10000 kg application range



MAX STATIC LOAD	kg	THREAD	DIMENSIONS	MATERIAL	NET WEIGHT (kg)
2500		M12x1.75	Ø80 x H 102 mm	stainless steel	0.4
5000		M20x2.5	Ø150 x H 102 mm		0.9
10000		M24x3	Ø150 x H 103 mm		0.9

DIMENSIONS AND APPLICATION**2500 kg****5000 kg****10000 kg**