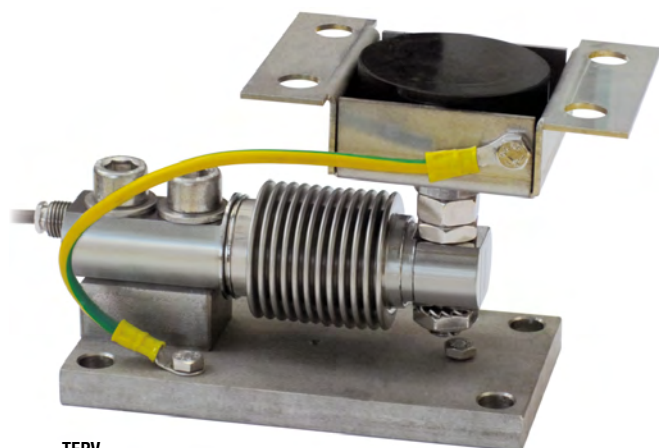
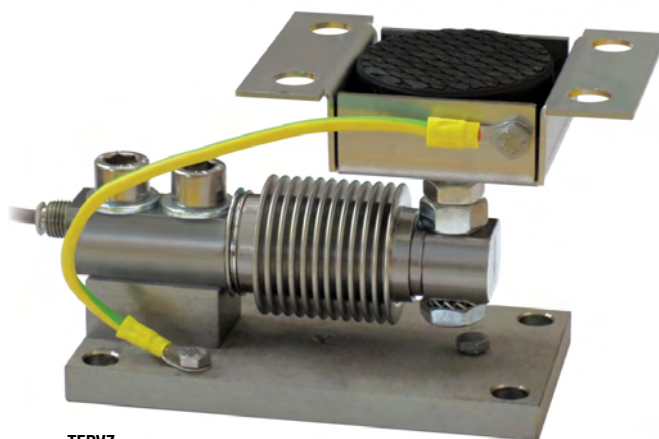


Series load cells: FCAL - FCAX

Up to 1500 kg application range



TFPV  
TFPV2000



TFPVZ

MAX STATIC LOAD	kg	FOR LOAD CELLS	NET WEIGHT (kg)	CODE
	500	FCAL - FCAX	2	TFPV
	500	FCAL - FCAX	2	TFPVZ
	1500	FCAX	2	TFPV2000

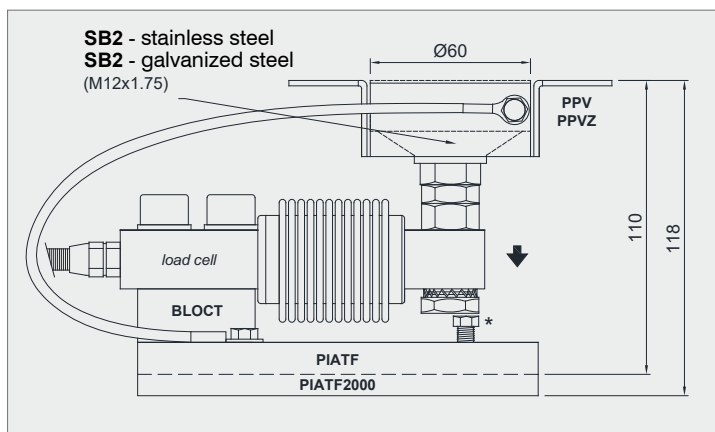
*Load cell not included*

### DESCRIPTION

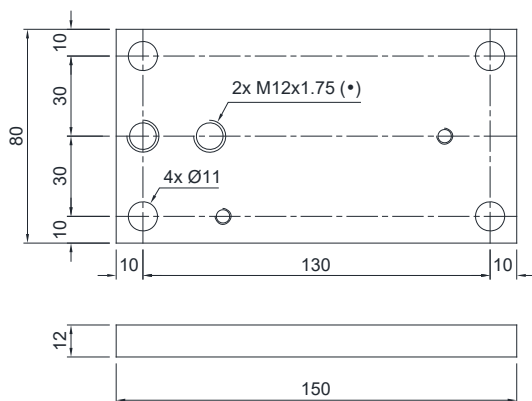
- Adjustable upper plate in AISI 304 stainless steel (PPV) or galvanized steel (PPVZ).
- Lower plate and block in AISI 304 stainless steel.
- Constraint against lateral forces and anti-tilt by AISI 304 stainless steel (TFPV, TFPV2000) or galvanized steel (TFPVZ) self-centering joint foot.
- Compensation for any misalignments of the support plates of the structure.
- Partial height adjustment.
- Locking screw to avoid damage during transport and installation.

### DIMENSIONS AND TECHNICAL SPECIFICATIONS

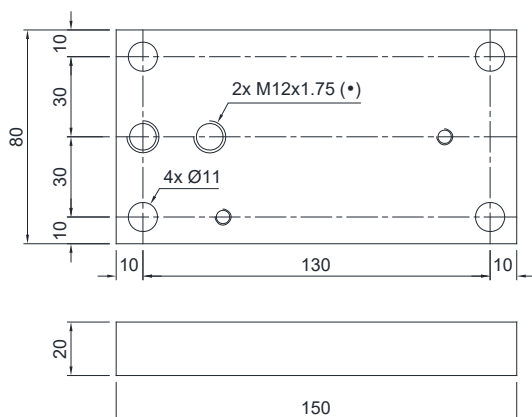
- During the transport and installation the lock (\*) must touch under the load cell. After installation, move the lock away from the load cell.
- Interconnect the plates to the earthing.
- In case of structure with four-point support, if one-point does not touch the upper part of the mounting kit, you must proceed to insert a shim before fixing the bolts.
- For the load cell fixing screws (\*), provide a tightening torque of 50 Nm.



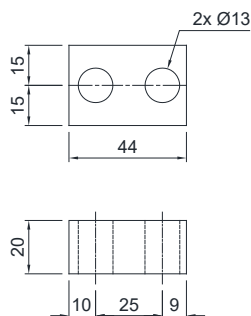
PIATF



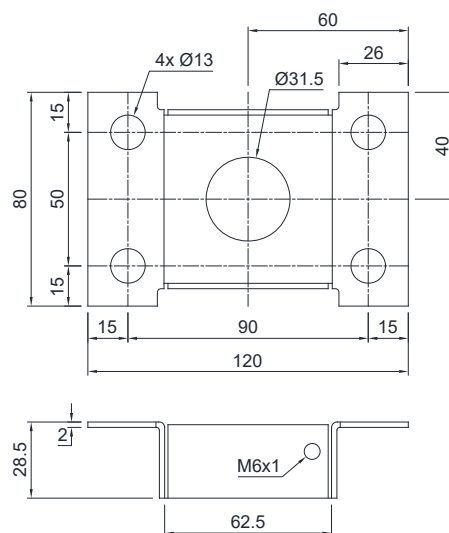
PIATF2000



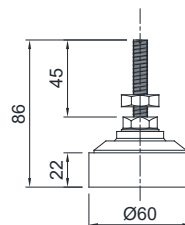
BLOCT



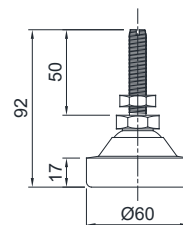
PPV  
PPVZ



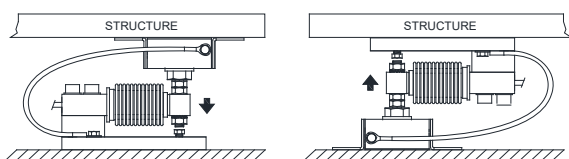
SB2 - galvanized steel  
(M12x1.75)



SB2 - stainless steel  
(M12x1.75)



FIXING TO THE WEIGHED STRUCTURE



POSSIBLE UPPER PLATE POSITIONS

