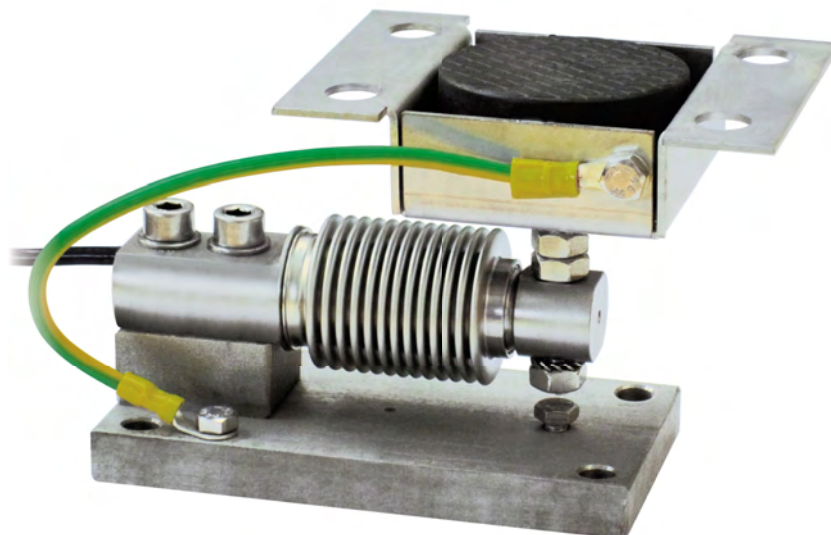


Series load cells: FCK - FCOL

Up to 300 kg application range



MAX STATIC LOAD kg	FOR LOAD CELLS	NET WEIGHT (kg)	CODE
200	FCK - FCOL	1.7	TFCPV
200	FCK - FCOL	1.7	TFCPVZ
300	FCOL (350 - 500 kg)	1.7	TFCPV10
300	FCOL (350 - 500 kg)	1.7	TFCPVZ10

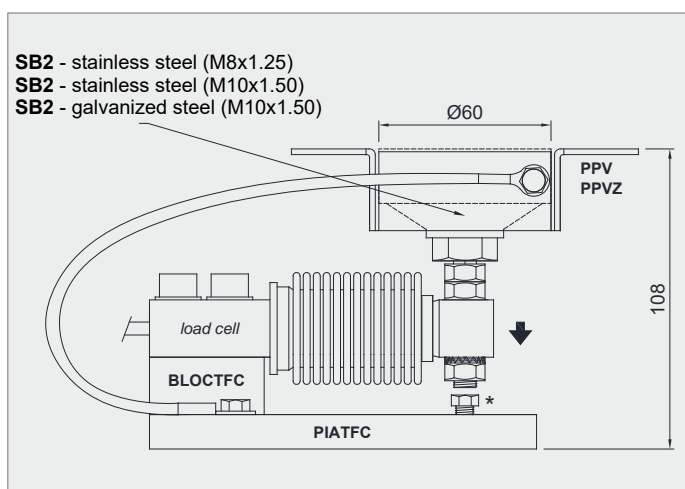
*Load cell not included*

### DESCRIPTION

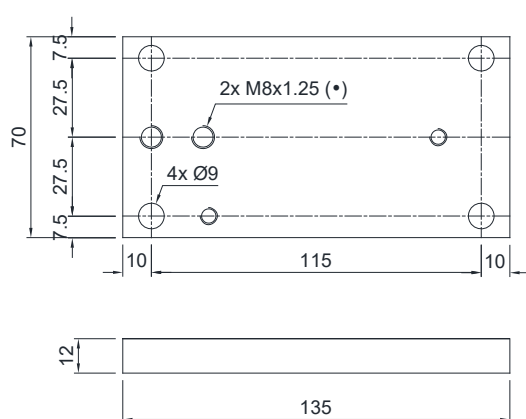
- Adjustable upper plate in AISI 304 stainless steel (PPV) or galvanized steel (PPVZ).
- Lower plate and block in AISI 304 stainless steel.
- Constraint against lateral forces and anti-tilt by AISI 304 stainless steel (TFCPV, TFCPVZ, TFCPV10) or galvanized steel (TFCPVZ10) self-centering joint foot.
- Compensation for any misalignments of the support plates of the structure.
- Partial height adjustment.
- Locking screw to avoid damage during transport and installation.

### DIMENSIONS AND TECHNICAL SPECIFICATIONS

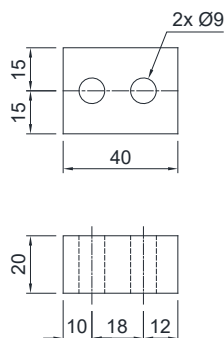
- During the transport and installation the lock (\*) must touch under the load cell. After installation, move the lock away from the load cell.
- Interconnect the lower plates to the earthing.
- In case of structure with four-point support, if one-point does not touch the upper part of the mounting kit, you must proceed to insert a shim before fixing the bolts.
- For the load cell fixing screws (\*), provide a tightening torque of 19 Nm.



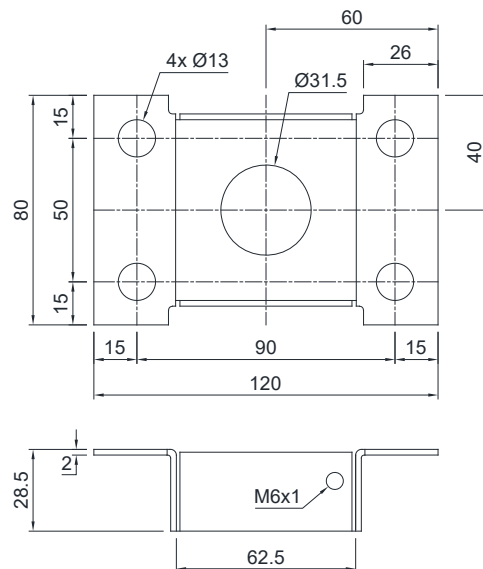
PIATFC



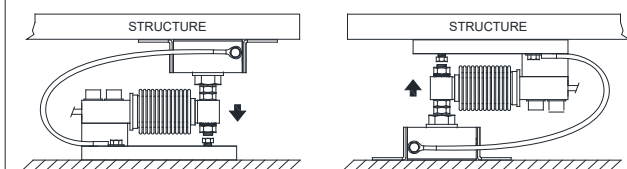
BLOCTFC



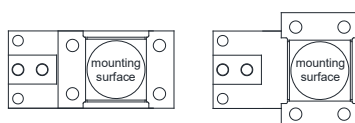
PPV  
PPVZ



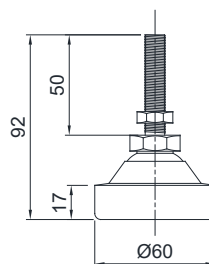
#### FIXING TO THE WEIGHED STRUCTURE



#### POSSIBLE UPPER PLATE POSITIONS



SB2 - stainless steel  
SB2 - galvanized steel  
(M10x1.50)



SB2 - stainless steel  
(M8x1.25)

