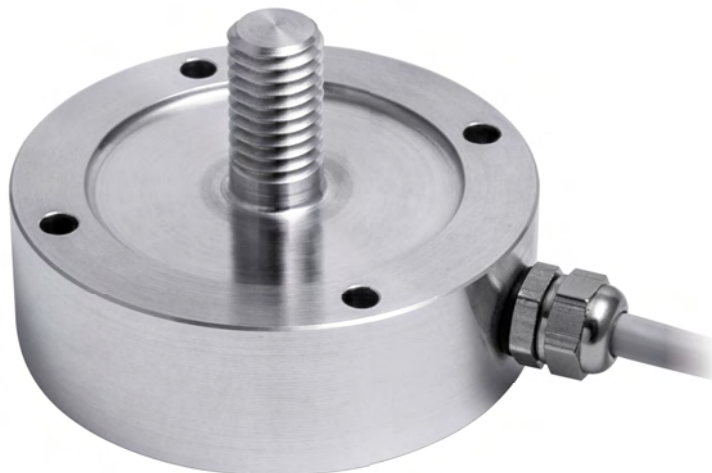




Manufactured according to OIML R60 standards

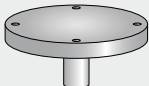
Capacity from 50 kg to 500 kg

- 50-100 kg: ALUMINUM ALLOY (AVIONAL)
- 500 kg: 17-4 PH STAINLESS STEEL
- COMBINED ERROR $\leq \pm 0.05\%$
- IP65 PROTECTION RATING





CAPACITY	kg	NET WEIGHT (kg)
50		0,15
100		0,15
500		0,25

COMPLEMENTARY ACCESSORIES

	DESCRIPTION	CODE
	Lower base	BINFCLBT

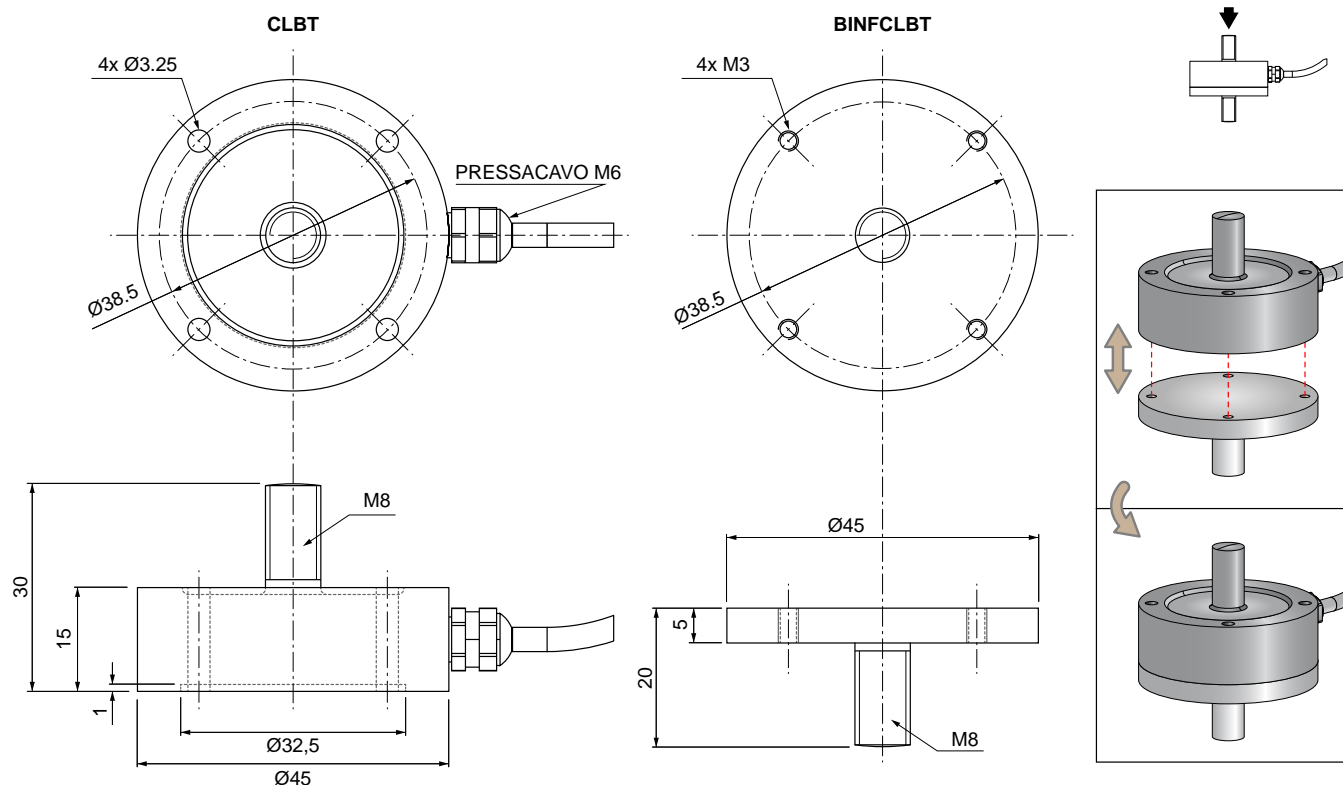
CERTIFICATIONS

-  Complies with the Eurasian Customs Union standards
-  Equivalent of the CE marking for the United Kingdom

CERTIFICATIONS ON REQUEST

-  Linearity test

DIMENSIONS (mm)

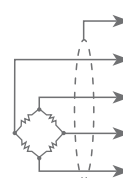


TECHNICAL FEATURES

Material		Aluminum alloy (Avional)	17-4 PH stainless steel
Nominal load (E max)		50 - 100 kg	500 kg
Combined error		≤ ±0.05%	
Protection rating		IP65	
Rated output	2 mV/V ±10%	Input resistance	700 Ω ±20
Temperature effect on zero	0.005% °C	Output resistance	700 Ω ±5
Temperature effect on span	0.005% °C	Zero balance	±1%
Compensated temperature range	-20 °C / +70 °C	Insulation resistance	>5000 MΩ
Operating temperature range	-30 °C / +90 °C	Safe overload (% of full scale)	150%
Creep at nominal load in 20 minutes	0.03%	Ultimate overload (% of full scale)	300%
Max supply voltage without damage	5÷15 V	Deflection at nominal load	0.3 mm

ELECTRICAL CONNECTIONS

Cable length	5 m
Cable diameter	5 mm
Cores	6 x 0.088 mm ²



SHIELD	
+ SIGNAL	GREEN
+ EXCITATION + REF./SENSE	RED BLUE
- SIGNAL	WHITE
- EXCITATION - REF./SENSE	BLACK BROWN