



capacity 6000 kg



capacity 1000 kg



- 17-4 PH STAINLESS STEEL
- COMBINED ERROR  $\leq \pm 0.03\%$
- IP67 - IP68 PROTECTION RATING
- TWO OUTPUT CABLES FOR DUAL SAFETY SYSTEMS

CAPACITY	kg	NET WEIGHT (kg)
	1000	0.93
	6000	1.54

### CERTIFICATIONS



Complies with the Eurasian Customs Union regulations



Equivalent of the CE marking for the United Kingdom

#### CERTIFICATIONS ON REQUEST

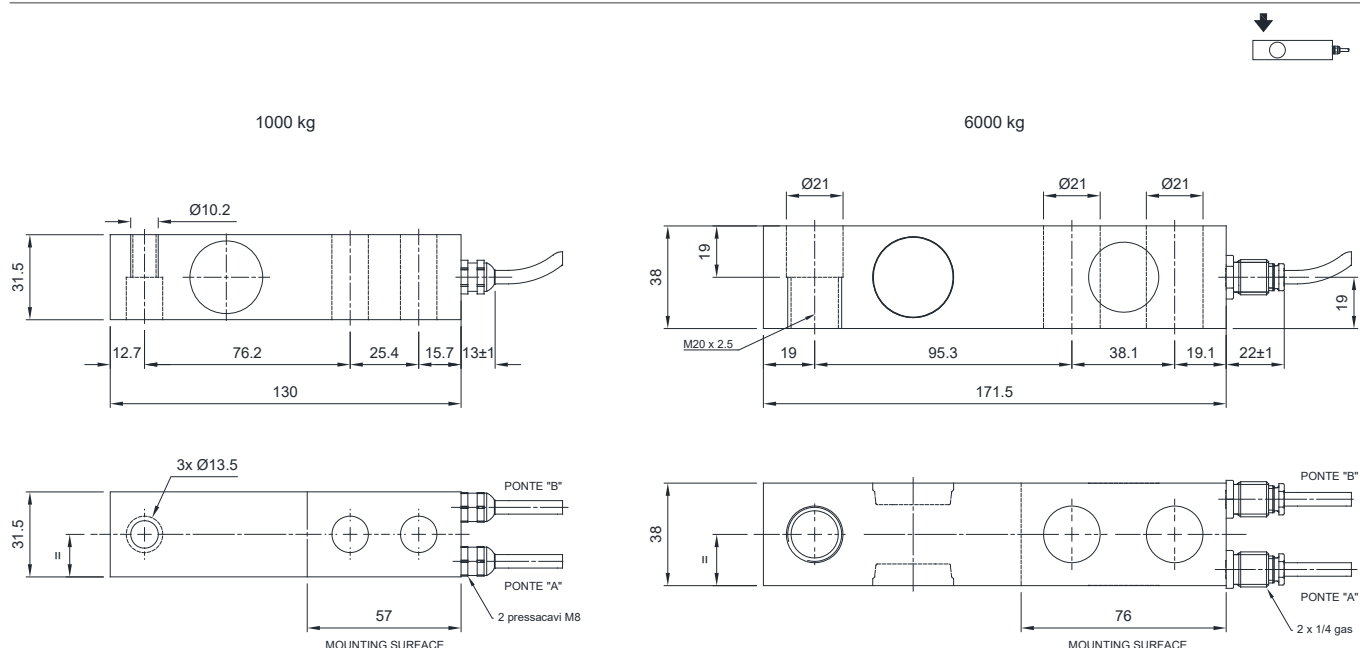
Calibration report

LAT Accredia calibration certificate ISO 376 or ASTM E74 for capacities from 1000 kg to 10000 kg



ATEX II 3GD (zone 2-22) (CE - UKCA)

### DIMENSIONS (mm)

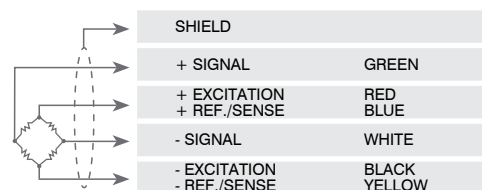


### TECHNICAL FEATURES

Material	17-4 PH stainless steel		
Nominal load (E max)	1000 - 6000 kg		
Combined error	≤ ±0.03%		
Protection rating	IP67 (1000 kg) - IP68 (6000 kg)		
Rated output	2 mV/V ± 0.1%	Input resistance	370 Ω ± 10
Temperature effect on zero	0.005% °C	Output resistance	355 Ω ± 5
Temperature effect on span	0.005% °C	Zero balance	±2%
Compensated temperature range	-10 °C / +50 °C	Insulation resistance	>5000 MΩ
Operating temperature range	-20 °C / +70 °C	Safe overload (% of full scale)	150%
Creep at nominal load in 30 minutes	0.02%	Ultimate overload (% of full scale)	300%
Max supply voltage without damage	15 V	Deflection at nominal load	0.25 mm

### ELECTRICAL CONNECTIONS

Cable length	5 m+5 m (1000 kg); 10 m+10 m (6000 kg)
Cable diameter	5 mm
Cores	6 x 0.25 mm <sup>2</sup>



The Company reserves the right to make changes to the technical data, drawings and images without notice.