

PVCLSEN1090

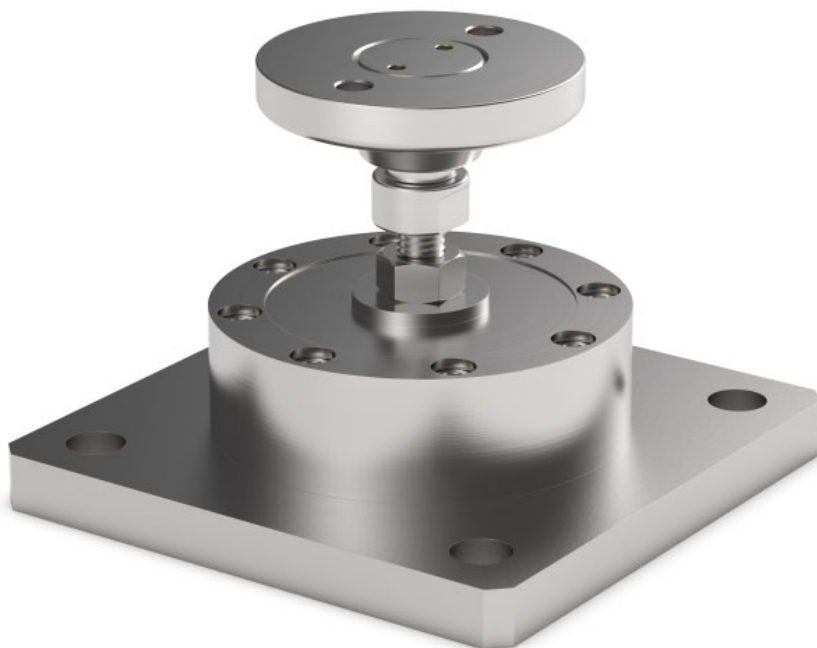
MOUNTING KIT for COMPRESSION-LOW PROFILE load cells

LAUMAS®

Series load cells: CLS



Up to 2000 kg application range
Certification EN1090



MAX STATIC LOAD	kg	FOR LOAD CELLS	NET WEIGHT (kg)	CODE
2000		CLS (1000 - 2000 kg)	0.6	PVCLSEN1090

Load cell not included.

DESCRIPTION

- Constraint against lateral forces and anti-tilt by AISI 304 stainless steel self-centering joint foot.
- Compensation for any misalignments of the support plates of the structure.
- Adjustable height.

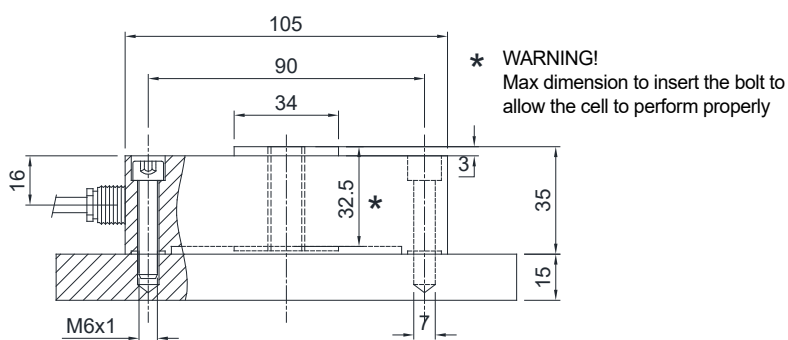
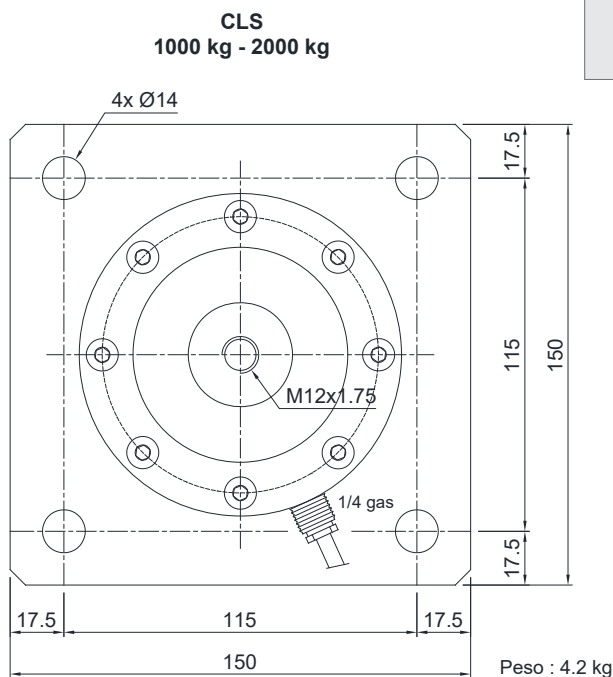
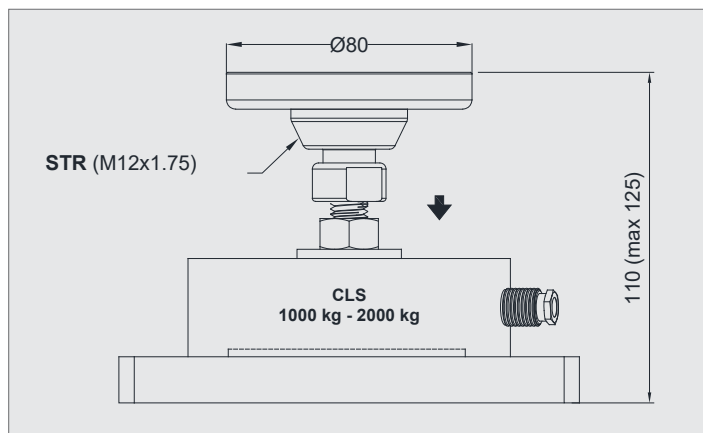
PVCLSEN1090

MOUNTING KIT for COMPRESSION-LOW PROFILE load cells

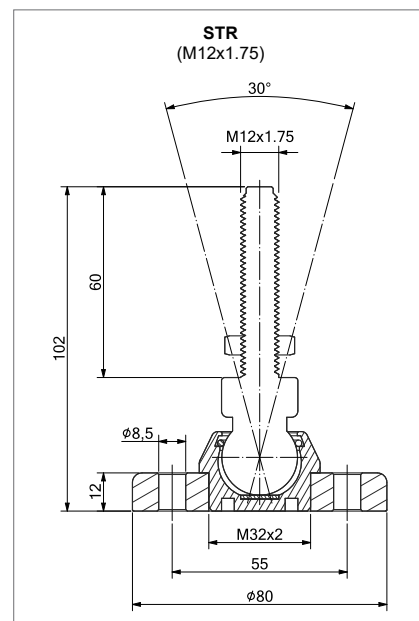
LAUMAS®

DIMENSIONS AND TECHNICAL SPECIFICATIONS

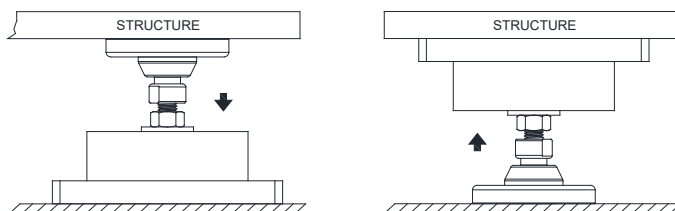
- Finished the installation by means of a copper wire, connect the upper supporting plate with the lower supporting plate, then connect all the lower plates to the earthing system.
- In case of structure with four-point support, if one-point does not touch the support base of the foot, you must proceed to adjust foot height.



* WARNING!
Max dimension to insert the bolt to
allow the cell to perform properly



FIXING TO THE WEIGHED STRUCTURE



The Company reserves the right to make changes to the technical data, drawings and images without notice.