

H 102 mm: for BENDING BEAM and SHEAR BEAM load cells

H 89 mm: for FLC load cells

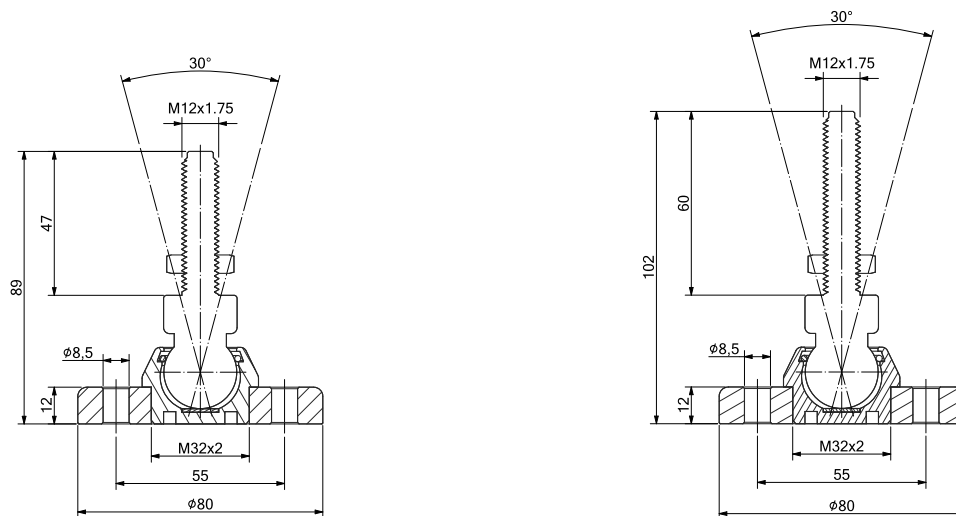
Up to 10000 kg application range



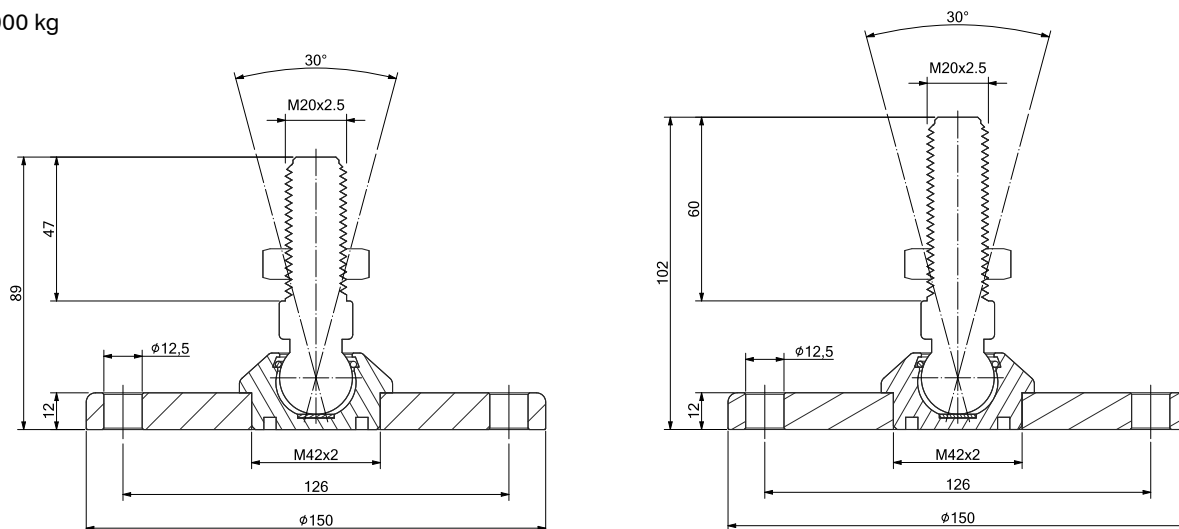
MAX STATIC LOAD	kg	THREAD	DIMENSIONS	MATERIAL	NET WEIGHT (kg)
2000		M12x1.75	Ø80 x H 102 mm	stainless steel	0.6
5000		M20x2.5	Ø150 x H 102 mm		1.9
2000		M12x1.75	Ø80 x H 89 mm	stainless steel	0.6
5000		M20x2.5	Ø150 x H 89 mm		1.9
10000		M24x3	Ø150 x H 89 mm		1.9

### DIMENSIONS

2000 kg



5000 kg



10000 kg

