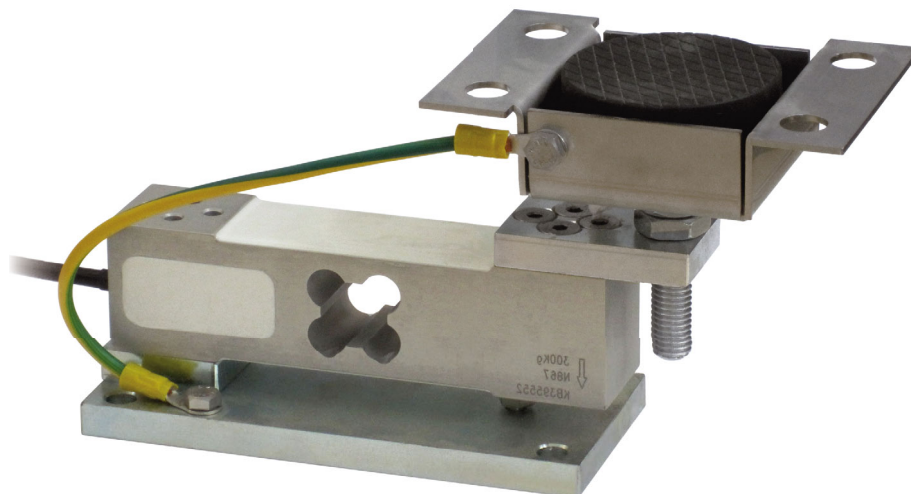


Series load cells: **AZLI - AZL - AZS - AM**

Up to 300 kg application range



MAX STATIC LOAD	kg	FOR LOAD CELLS	NET WEIGHT (kg)	CODE
	<b>200</b>	AZLI (max 50 kg) - AZL - AZS	1.7	T8AZL
	<b>300</b>	AM	1.7	T8AM

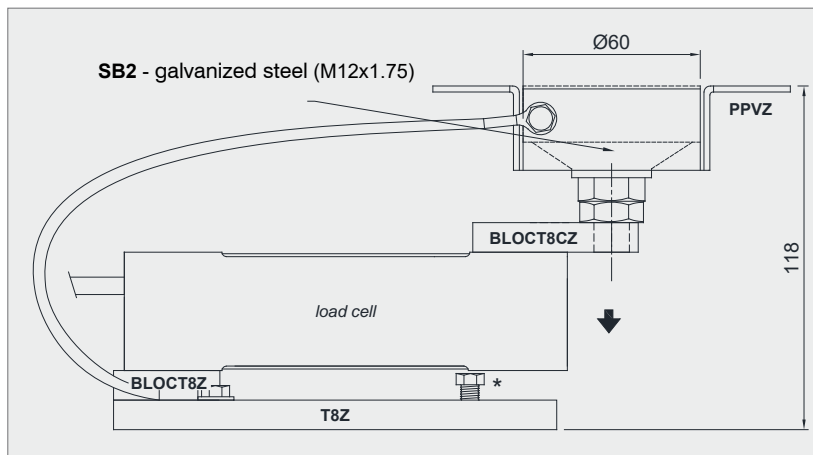
*Load cell not included*

### DESCRIPTION

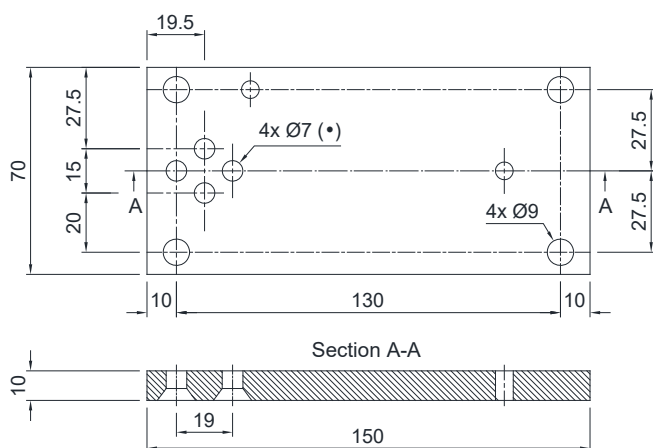
- Adjustable upper plate in galvanized steel (PPVZ).
- Lower plate and block in galvanized steel.
- Constraint against lateral forces and anti-tilt by galvanized steel self-centering joint foot.
- Compensation for any misalignments of the support plates of the structure.
- Adjustable height.
- Locking screw to avoid damage during transport and installation.
- Can be used for systems with at least 3 supports.

### DIMENSIONS AND TECHNICAL SPECIFICATIONS

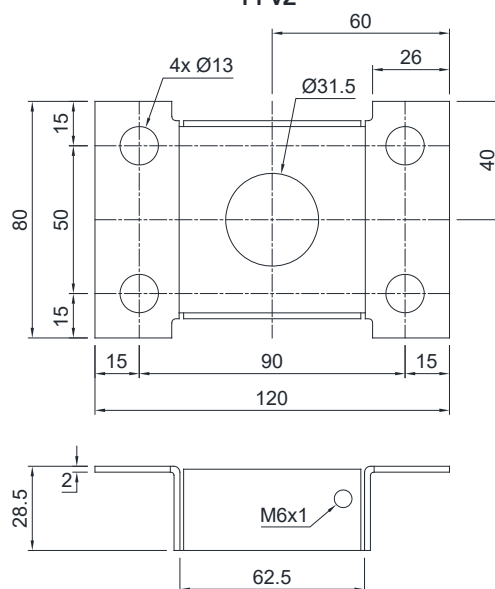
- During the transport and installation the lock (\*) must touch under the load cell. After installation, move the lock away from the load cell.
- Interconnect the lower plates to the earthing.
- In case of structure with four-point support, if one-point does not touch the support base of the foot, you must proceed to adjust foot height.
- For the load cell fixing screws (\*), provide a tightening torque of 7.5 Nm.



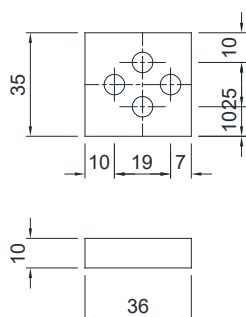
T8Z



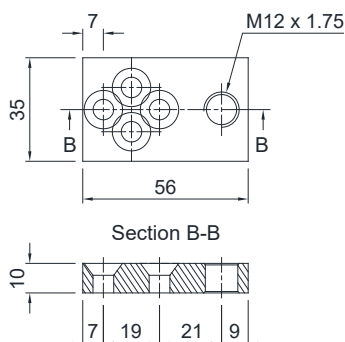
PPVZ



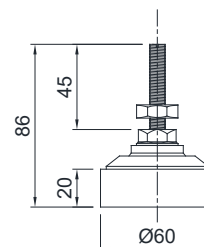
BLOCT8Z



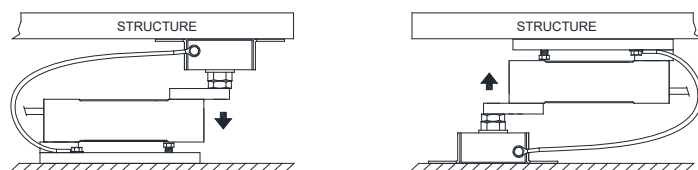
BLOCT8CZ



SB2 - galvanized steel  
(M12x1.75 mm)



FIXING TO THE WEIGHED STRUCTURE



POSSIBLE UPPER PLATE POSITIONS

