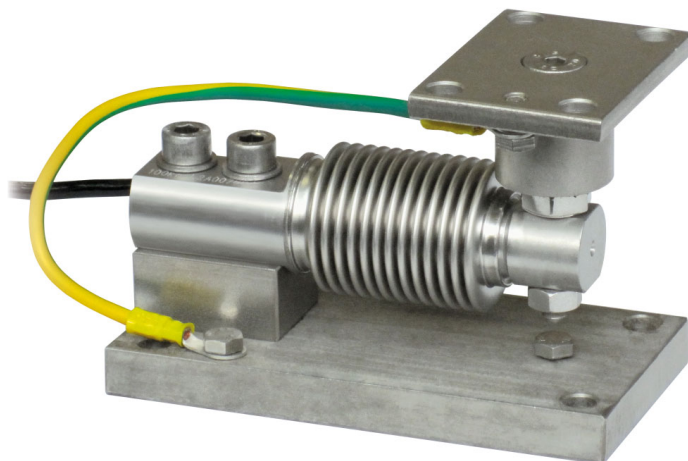


Series load cells: FCK - FCOL

Up to 300 kg application range



MAX STATIC LOAD	kg	FOR LOAD CELLS	NET WEIGHT (kg)	CODE
	300	FCK - FCOL	1.3	TFCGP

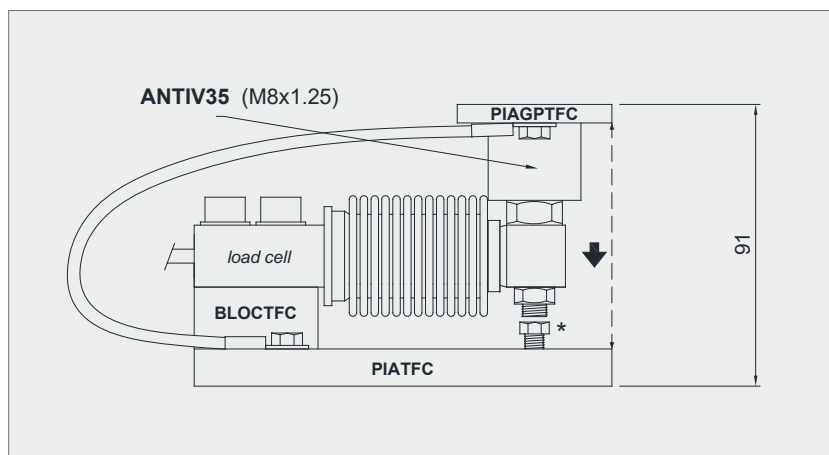
*Load cell not included*

### DESCRIPTION

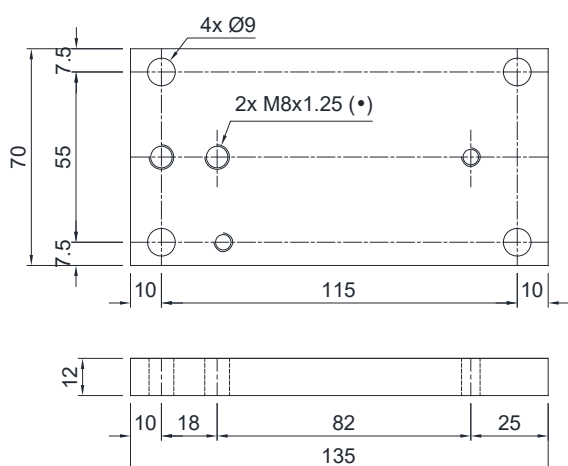
- Upper plate with a compression joint in AISI 304 stainless steel and rubber.
- Lower plate and block in AISI 304 stainless steel.
- Compensation for any misalignments of the support plates of the structure.
- Locking screw to avoid damage during transport and installation.
- Can be used for systems with at least 3 supports.

### DIMENSIONS AND TECHNICAL SPECIFICATIONS

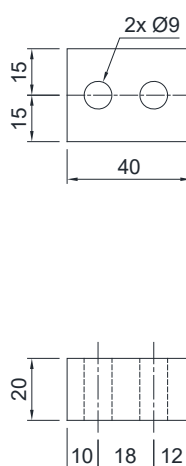
- During the transport and installation the lock (\*) must touch under the load cell. After installation, move the lock away from the load cell.
- Interconnect the lower plates to the earthing.
- In case of structure with four-point support, if one-point does not touch the upper part of the mounting kit, you must proceed to insert a shim before fixing the bolts.
- For the load cell fixing screws (\*), provide a tightening torque of 19 Nm.



PIATFC



BLOCTFC



PIAGPTFC

