



Manufactured according to OIML R60 standards

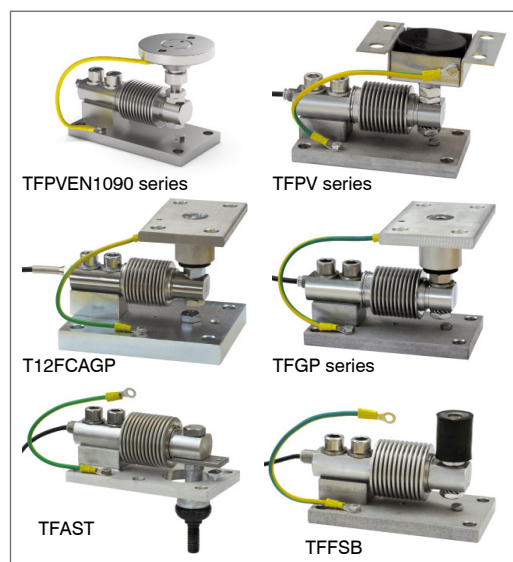
BENDING BEAM: capacity from 30 kg to 500 kg

SHEAR BEAM: capacity from 750 kg to 1500 kg

- AISI 420 STAINLESS STEEL
- COMBINED ERROR $\leq \pm 0.02\%$
- IP68 PROTECTION RATING



MOUNTING KITS



CAPACITY	kg	NET WEIGHT (kg)
	30	0.6
	50	0.6
	75	0.6
	150	0.6
	300	0.7
	500	0.7
	750	0.7
	1000	0.7
	1500	0.7

CERTIFICATIONS



Complies with the Eurasian Customs Union regulations



Equivalent of the CE marking for the United Kingdom

CERTIFICATIONS ON REQUEST

Calibration report

LAT Accredia calibration certificate ISO 376 or ASTM E74 for capacities from 1000 kg to 10000 kg



ATEX II 1G 2D (zone 0-1-2-21-22) (CE - UKCA)



IECEx (zone 0-1-2-20-21-22)

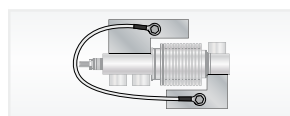


Complies with the Eurasian Customs Union regulations for use in potentially explosive atmospheres



Complies with Chinese market regulations for use in potentially explosive atmospheres

COMPLEMENTARY ACCESSORIES



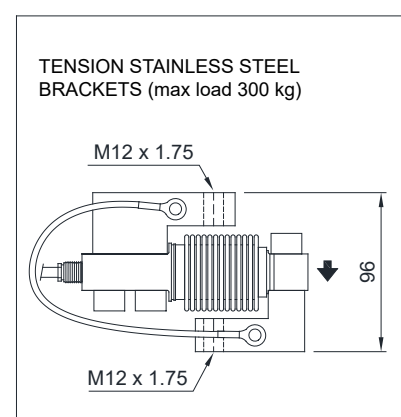
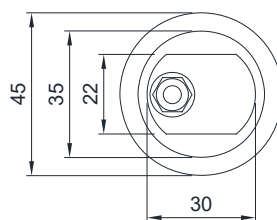
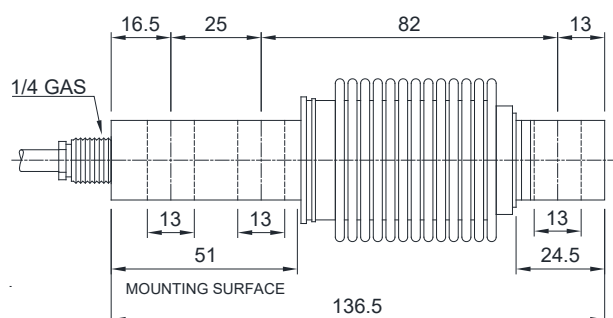
DESCRIPTION

Pair of tension stainless steel brackets.
Maximum static load: 300 kg

CODE

STAFFEFCA

DIMENSIONS (mm)



For the load cell fixing screws, provide the tightening torque indicated in the table

Screw	M12	
Screw class	6.8	8.8
Tightening torque	50 Nm	79 Nm

TECHNICAL FEATURES

Material	AISI 420 stainless steel		
Nominal load (E max)	30 - 50 - 75 - 150 - 300 - 500 - 750 - 1000 - 1500 kg		
Combined error	$\leq \pm 0.02\%$		
Protection rating	IP68		

Rated output	2 mV/V $\pm 0.4\%$	Input resistance	385 $\Omega \pm 5$
Temperature effect on zero	0.002% $^{\circ}\text{C}$	Output resistance	350 $\Omega \pm 5$
Temperature effect on span	0.002% $^{\circ}\text{C}$	Zero balance	$\pm 1\%$
Compensated temperature range	-10 $^{\circ}\text{C}$ / +40 $^{\circ}\text{C}$	Insulation resistance	>5000 M Ω
Operating temperature range	-20 $^{\circ}\text{C}$ / +50 $^{\circ}\text{C}$	Safe overload (% of full scale)	150%
Creep at nominal load in 30 minutes	0.02%	Ultimate overload (% of full scale)	300%
Max supply voltage without damage	15 V	Deflection at nominal load	0.4 mm

ELECTRICAL CONNECTIONS

Cable length	5 m
Cable diameter	5 mm
Cores	6 x 0.22 mm ²

	SHIELD	
	+ SIGNAL	GREEN
	+ EXCITATION	RED
	+ REF./SENSE	BLUE
	- SIGNAL	WHITE
	- EXCITATION	BLACK
	- REF./SENSE	YELLOW