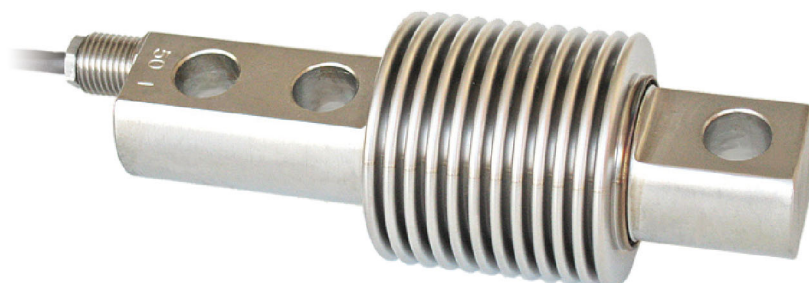


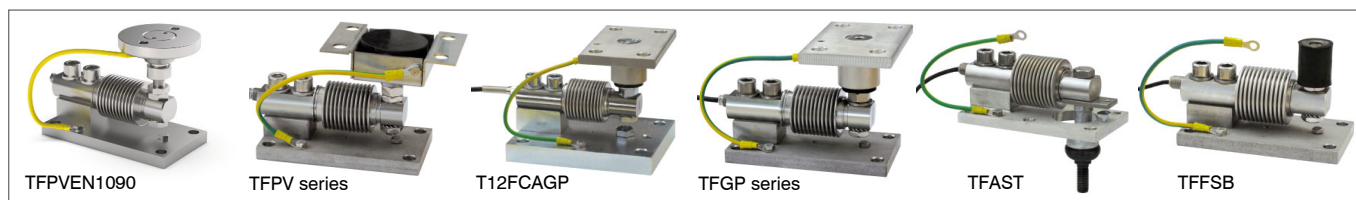


Capacity from 50 kg to 300 kg

- AISI 420 STAINLESS STEEL
- COMBINED ERROR  $\leq \pm 0.017\%$
- IP68 PROTECTION RATING



### MOUNTING KITS



CAPACITY	kg	ACCURACY CLASS C3		NET WEIGHT (kg)
50		•	•	0.5
75		•	•	0.5
150		•	•	0.5
300		•	•	0.5

### CERTIFICATIONS

- OIML R60 C3
- Complies with the Eurasian Customs Union regulations
- Equivalent of the CE marking for the United Kingdom
- Complies with United Kingdom regulations for legal for trade use

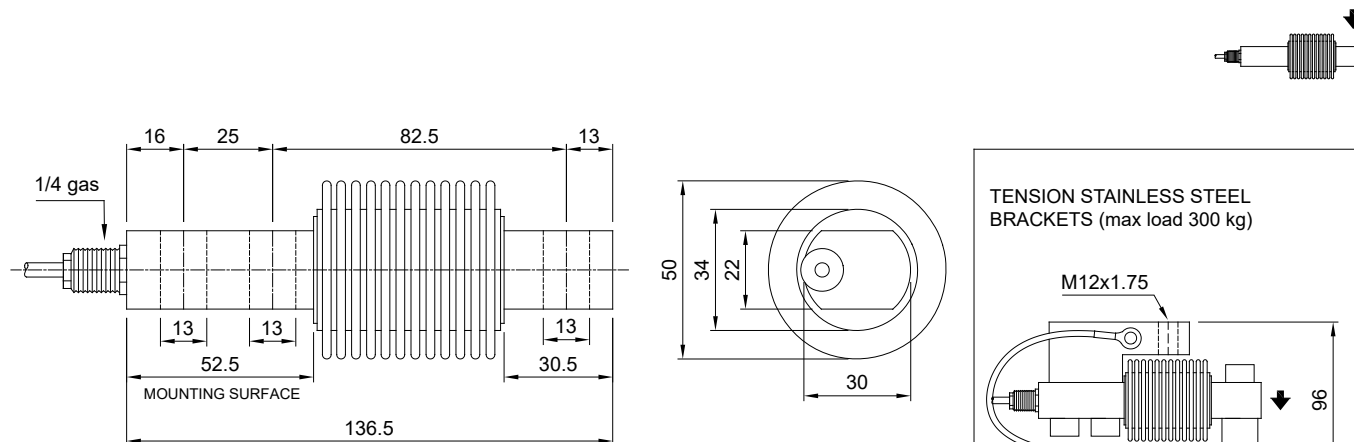
#### CERTIFICATIONS ON REQUEST

	Calibration report
	ATEX II 1G 2D (zone 0-1-2-21-22) (CE - UK CA)
	IECEx (zone 0-1-2-20-21-22)
	Complies with the Eurasian Customs Union regulations for use in potentially explosive atmospheres
	Complies with Chinese market regulations for use in potentially explosive atmospheres

### COMPLEMENTARY ACCESSORIES

DESCRIPTION	CODE
<p>Pair of tension stainless steel brackets. Maximum static load: 300 kg</p>	STAFFEFCA

### DIMENSIONS (mm)



For the load cell fixing screws, provide the tightening torque indicated in the table

Screw	M12	
Screw class	6.8	8.8
Tightening torque	50 Nm	79 Nm

### TECHNICAL FEATURES

Material	AISI 420 stainless steel		
OIML R60 Accuracy class • Verification intervals	C3 • 3000		
Nominal load (E max)	50 - 75 -150 - 300 kg		
Minimum verification interval (V min)	E max / 10000		
Combined error	≤ ±0.017%		
Protection rating	IP68		

Rated output	2.0 mV/V ±0.1%	Input resistance	400 Ω ±20
Temperature effect on zero	0.002% °C	Output resistance	350 Ω ±3
Temperature effect on span	0.0012% °C	Zero balance	±2%
Compensated temperature range	-10 °C / +40 °C	Insulation resistance	>5000 MΩ
Operating temperature range	-20 °C / +50°C	Safe overload (% of full scale)	150%
Creep at nominal load in 30 minutes	0.016%	Ultimate overload (% of full scale)	200%
Max supply voltage without damage	15 V	Deflection at nominal load	0.4 mm

### ELECTRICAL CONNECTIONS

Cable length	3 m
Cable diameter	4 mm
Cores	4 x 0.22 mm <sup>2</sup>

