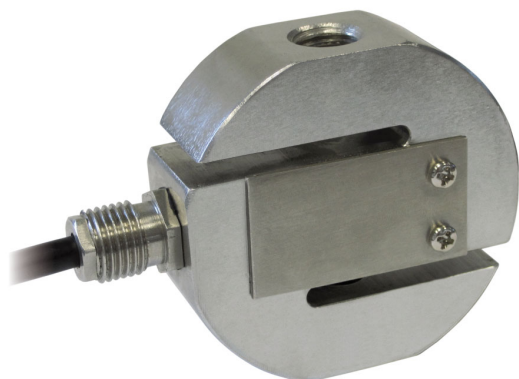




Manufactured according to OIML R60 standards

### Capacity from 50 kg to 300 kg



### Capacity from 500 kg to 5000 kg



- AISI 420 STAINLESS STEEL
- COMBINED ERROR  $\leq \pm 0.03\%$
- IP67 PROTECTION RATING

CAPACITY	kg	NET WEIGHT (kg)
50		0.7
100		0.7
200		0.7
300		0.7
500		0.7
1000		1.4
2500		1.4
5000		2.7

### CERTIFICATIONS



Complies with the Eurasian Customs Union regulations



Equivalent of the CE marking for the United Kingdom

#### CERTIFICATIONS ON REQUEST

Calibration report

LAT Accredia calibration certificate ISO 376 or ASTM E74 for capacities from 1000 kg to 10000 kg



ATEX II 1G 2D (zone 0-1-2-21-22) (CE - UKCA)



IECEx (zone 0-1-2-20-21-22)




Complies with the Eurasian Customs Union regulations for use in potentially explosive atmospheres

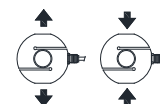
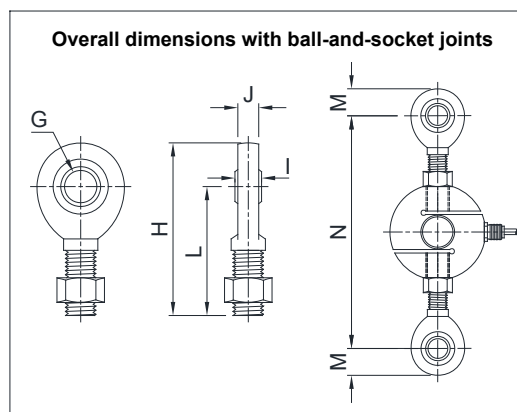
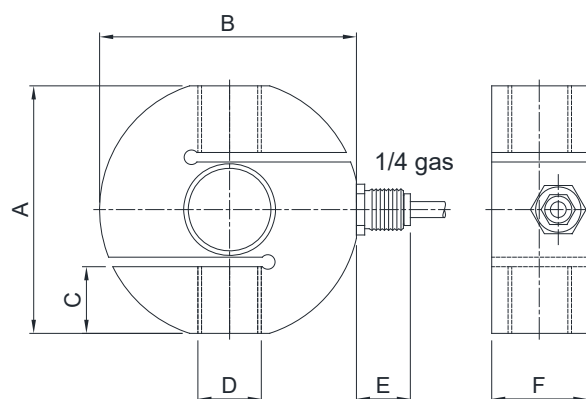


Complies with Chinese market regulations for use in potentially explosive atmospheres

### COMPLEMENTARY ACCESSORIES

	DESCRIPTION	DIMENSIONS	LOAD CELL CAPACITY	CODE
	Ball-and-socket joint with nut:			
	stainless steel	M12x1.75	50-500 kg	EM-INOX
		M16x2	1000 kg	
		M20x1.5	2500 kg	
		M24x2	5000 kg	
	galvanized C45 steel	M12x1.75	50-500 kg	EM
		M16x2	1000 kg	
		M20x1.5	2500 kg	
		M24x2	5000 kg	

### DIMENSIONS (mm)



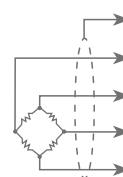
	A	B	C	D	E	F	G	H	I	J	L	M	N (≈)
50 kg 500 kg	59.5	63.5	14.5	M12x1.75	17	22	Ø12	71	10	8.5	54.5	16.5	140
1000 kg	78	82	21	M16x2	17	30	Ø17	92	14	11.5	69.5	22.5	176
2500 kg	78	82	21	M20x1.5	17	30	Ø20	104.5	16	13.5	77.5	27	191
5000 kg	90	102	24	M24x2	17	45	Ø25	126	20	17.5	94.5	31.5	230

### TECHNICAL FEATURES

Material	AISI 420 stainless steel		
Nominal load (E max)	50 - 100 - 200 - 300 - 500 - 1000 - 2500 - 5000 kg		
Combined error	$\leq \pm 0.03\%$		
Protection rating	IP67		
Rated output	2 mV/V $\pm 0.4\%$	Input resistance	385 $\Omega \pm 30$
Temperature effect on zero	0.0025% $^{\circ}\text{C}$	Output resistance	350 $\Omega \pm 10$
Temperature effect on span	0.0025% $^{\circ}\text{C}$	Zero balance	$\pm 2\%$
Compensated temperature range	-10 $^{\circ}\text{C}$ / +40 $^{\circ}\text{C}$	Insulation resistance	>2000 M $\Omega$
Operating temperature range	-20 $^{\circ}\text{C}$ / +60 $^{\circ}\text{C}$	Safe overload (% of full scale)	150%
Creep at nominal load in 30 minutes	0.03%	Ultimate overload (% of full scale)	250%
Max supply voltage without damage	15 V	Deflection at nominal load	0.4 mm

### ELECTRICAL CONNECTIONS

Cable length	10 m
Cable diameter	6 mm
Cores	6 x 0.20 mm <sup>2</sup>



SHIELD

+ SIGNAL

GREEN

+ EXCITATION  
+ REF./SENSERED  
BLUE

- SIGNAL

WHITE

- EXCITATION  
- REF./SENSEBLACK  
YELLOW