



Manufactured according to OIML R60 standards

Capacity from 30000 kg to 250000 kg



- 17-4 PH STAINLESS STEEL
- HOLES FOR STANDARD SHACKLES
- COMBINED ERROR $\leq \pm 0.08\%$
- IP68 PROTECTION RATING

CAPACITY	kg	NET WEIGHT (kg)
30000		11
40000		11
50000		11
60000		11
100000		-
250000		64

CERTIFICATIONS

- EAC** Complies with the Eurasian Customs Union standards
- UKCA** Equivalent of the CE marking for the United Kingdom

CERTIFICATIONS ON REQUEST

- ✓ Linearity test
- Ex** ATEX II 1GD (zone 0-1-2-20-21-22) (**CE** - **UKCA**)
- IECEx** IECEx (zone 0-1-2-20-21-22)
- EAC Ex** Complies with the Eurasian Customs Union standards for use in potentially explosive atmospheres

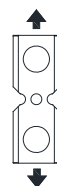
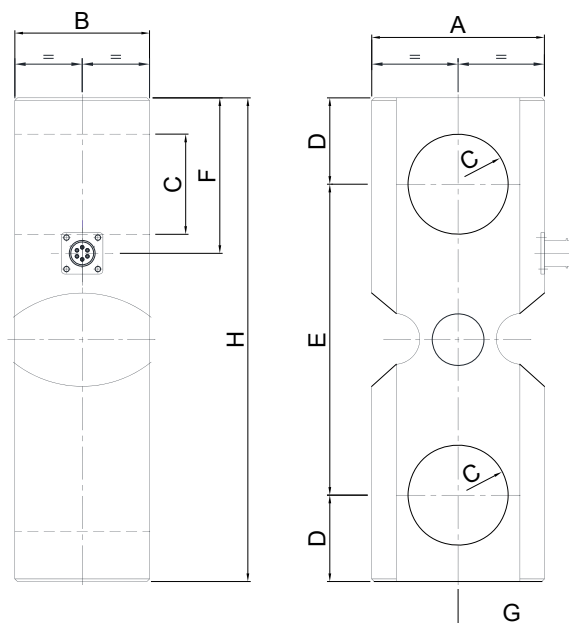
OPTIONS ON REQUEST

DESCRIPTION



Two redundant strain gauges Wheatstone bridges (350 Ω) with two output cables; for dual safety systems.

DIMENSIONS (mm)



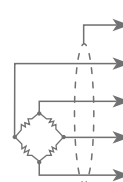
	kg 30000 kg 40000 kg 50000 kg 60000	kg 100000	kg 250000
A	100	127	240
B	78	88	110
C	Ø 58	Ø 71	Ø 102
D	50	70	120
E	180	200	360
F	90	120	185
G	65	68	136
H	280	340	600

TECHNICAL FEATURES

Material	AISI 420 stainless steel		
Nominal load (E max)	30000 - 40000 - 50000 - 60000 - 100000 - 250000 kg		
Combined error	≤ ±0.08%		
Protection rating	IP68		
Rated output	1.0 mV/V ±0.1%	Input resistance	350 Ω ±20
Temperature effect on zero	0.005% °C	Output resistance	350 Ω ±5
Temperature effect on span	0.005% °C	Zero balance	±1%
Compensated temperature range	-20 °C / +70 °C	Insulation resistance	>5000 MΩ
Operating temperature range	-30 °C / +90 °C	Safe overload (% of full scale)	150%
Creep at nominal load in 30 minutes	0.03%	Ultimate overload (% of full scale)	300%
Max supply voltage without damage	15 V	Deflection at nominal load	0.3 mm

ELECTRICAL CONNECTIONS

Cable length	10 m
Cable diameter	6 mm
Cores	6 x 0.14 mm²



SHIELD	
+ SIGNAL	GREEN
+ EXCITATION + REF./SENSE	RED BLUE
- SIGNAL	WHITE
- EXCITATION - REF./SENSE	BLACK BROWN