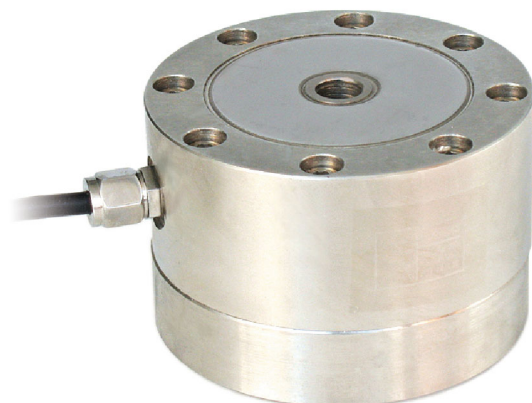




Manufactured according to OIML R60 standards

Capacity from 10000 kg to 20000 kg



- SPECIAL STEEL
- BIDIRECTIONAL TENSION AND COMPRESSION
- COMBINED ERROR $\leq \pm 0.1\%$
- IP67 PROTECTION RATING

CAPACITY	kg	NET WEIGHT (kg)
10000		10.5
20000		11

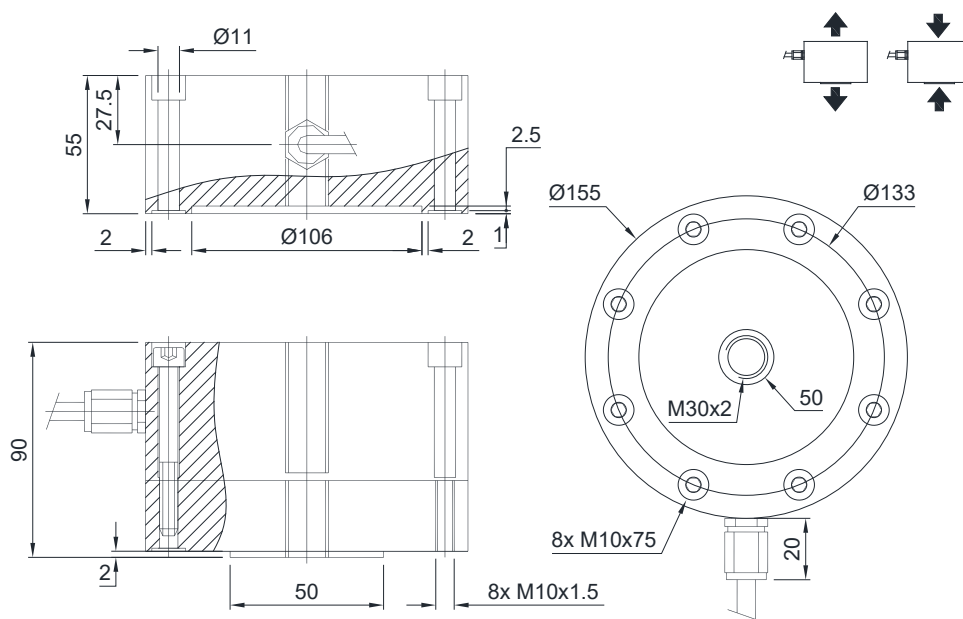
CERTIFICATIONS

- EAC** Complies with the Eurasian Customs Union regulations
- UK** Equivalent of the CE marking for the United Kingdom

CERTIFICATIONS ON REQUEST

	Calibration report
	LAT Accredia calibration certificate ISO 376 or ASTM E74 for <u>capacities from 1000 kg to 10000 kg</u>
	ATEX II 1G 2D (zone 0-1-2-21-22) (CE - UK)
	IECEx (zone 0-1-2-20-21-22)
EAC	Complies with the Eurasian Customs Union regulations for use in potentially explosive atmospheres
	Complies with Chinese market regulations for use in potentially explosive atmospheres

DIMENSIONS (mm)



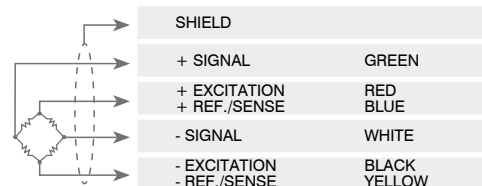
TECHNICAL FEATURES

Material	Special steel		
Nominal load (E max)	10000 - 20000 kg		
Combined error	$\leq \pm 0.1\%$		
Protection rating	IP67		

Rated output	2 mV/V $\pm 0.3\%$	Input resistance	352 $\Omega \pm 3$
Temperature effect on zero	0.002% $^{\circ}\text{C}$	Output resistance	400 $\Omega \pm 20$
Temperature effect on span	0.002% $^{\circ}\text{C}$	Zero balance	$\pm 1\%$
Compensated temperature range	-10 $^{\circ}\text{C}$ / +50 $^{\circ}\text{C}$	Insulation resistance	>5000 M Ω
Operating temperature range	-30 $^{\circ}\text{C}$ / +70 $^{\circ}\text{C}$	Safe overload (% of full scale)	150%
Creep at nominal load in 30 minutes	0.03%	Ultimate overload (% of full scale)	200%
Max supply voltage without damage	15 V	Deflection at nominal load	0.3 mm

ELECTRICAL CONNECTIONS

Cable length	12 m
Cable diameter	6 mm
Cores	6 x 0.24 mm ²



The Company reserves the right to make changes to the technical data, drawings and images without notice.