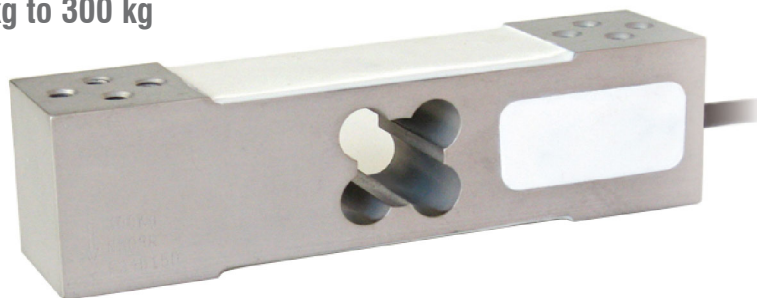
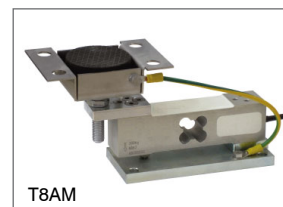




Capacity from 60 kg to 300 kg



MOUNTING KIT



T8AM

Can be used for systems with at least 3 supports

- ALUMINUM ALLOY
- COMBINED ERROR $\leq \pm 0.02\%$ (0.017% C4; 0.014% C5)
- IP65 PROTECTION RATING

CAPACITY	kg	ACCURACY CLASS					PLATFORM (mm)	NET WEIGHT (kg)
		C3	C4	C5				
60		•	•	–	•	•	400 x 400	0.6
100		•	•	–	•	•	400 x 400	0.6
150		•	•	–	•	•	400 x 400	0.6
200		•	•	–	•	•	400 x 400	0.6
300		•	•	•	•	•	400 x 400	0.6

ON REQUEST

CERTIFICATIONS



OIML R60 C3



Complies with the Eurasian Customs Union regulations



Equivalent of the CE marking for the United Kingdom



Complies with United Kingdom regulations for legal for trade use

CERTIFICATIONS ON REQUEST

Calibration report



ATEX II 1G 2D (zone 0-1-2-21-22) (CE - UKCA)



IECEx (zone 0-1-2-20-21-22)



OIML R60 C4/C5



Complies with the Eurasian Customs Union regulations for use in potentially explosive atmospheres



Complies with Chinese market regulations for use in potentially explosive atmospheres

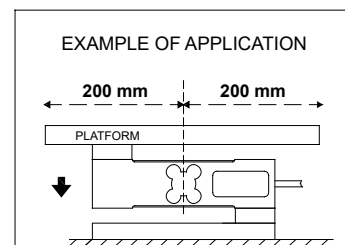
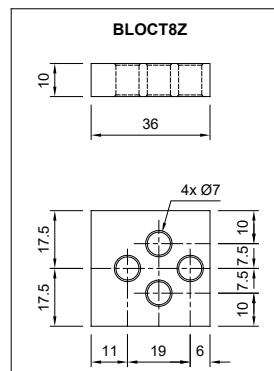
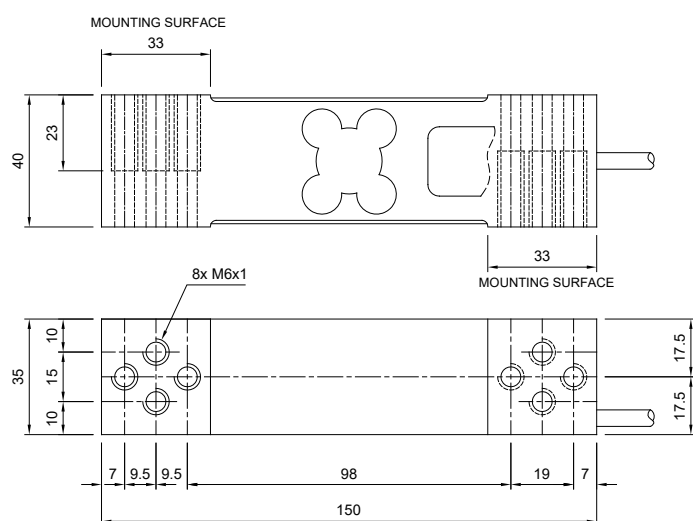


NTEP - Complies with United States regulations for legal for trade use

COMPLEMENTARY ACCESSORIES

	DESCRIPTION	CODE
	Stainless steel and rubber waterproof kit.	IP68AM
	Galvanized steel drawn block.	BLOCT8Z

DIMENSIONS (mm)



For the load cell fixing screws, provide the tightening torque indicated in the table

Screw	M6	
Screw class	6.8	8.8
Tightening torque	7.5 Nm	10 Nm

TECHNICAL FEATURES

Material		Aluminum alloy		
OIML R60 Accuracy class • Verification intervals		C3 • 3000	C4 • 4000	C5 • 5000
Nominal load (E max)		60 - 100 - 150 - 200 - 300 kg		300 kg
Minimum verification interval (V min)		E max / 10000	E max / 15000	E max / 20000
Combined error		≤ ±0.02%	≤ ±0.017%	≤ ±0.014%
Protection rating		IP65		
Rated output	2 mV/V ± 10%	Input resistance	406 Ω ± 6	
Temperature effect on zero	0.003% °C	Output resistance	350 Ω ± 3	
Temperature effect on span	0.002% °C	Zero balance	≤ ±2%	
Compensated temperature range	-10 °C / +40 °C	Insulation resistance	≥ 5000 MΩ	
Operating temperature range	-35 °C / +65 °C	Safe overload (% of full scale)	150%	
Creep at nominal load in 30 minutes	0.025%	Ultimate overload (% of full scale)	300%	
Max supply voltage without damage	18 V	Deflection at nominal load	0.5 mm	

ELECTRICAL CONNECTIONS

Cable length	3 m
Cable diameter	5 mm
Cores	4 x 0.20 mm²

SHIELD	
+ SIGNAL	GREEN
+ EXCITATION	RED
- SIGNAL	WHITE
- EXCITATION	BLACK