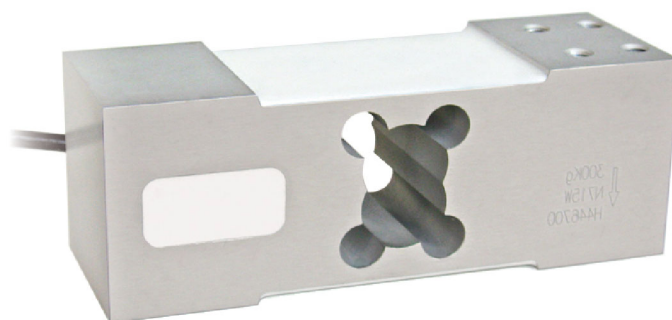




Capacity from 50 kg to 500 kg

- ALUMINUM ALLOY
- COMBINED ERROR $\leq \pm 0.02\%$ (0.017% C4)
- IP65 PROTECTION RATING



CAPACITY	kg	ACCURACY CLASS			PLATFORM (mm)	NET WEIGHT (kg)
		C3	C4			
50		•	—	•	600 x 600	1.7
100		•	—	•	600 x 600	1.7
150		•	•	•	600 x 600	1.7
200		•	•	•	600 x 600	1.7
300		•	•	•	600 x 600	1.7
500		•	•	•	600 x 600	1.7

ON REQUEST

CERTIFICATIONS

- OIML R60 C3
- Complies with the Eurasian Customs Union regulations
- Equivalent of the CE marking for the United Kingdom
- Complies with United Kingdom regulations for legal for trade use

CERTIFICATIONS ON REQUEST

	Calibration report
	ATEX II 1G 2D (zone 0-1-2-21-22) (CE - UK CA)
	IECEx (zone 0-1-2-20-21-22)
	OIML R60 C4
	Complies with the Eurasian Customs Union regulations for use in potentially explosive atmospheres
	Complies with Chinese market regulations for use in potentially explosive atmospheres

COMPLEMENTARY ACCESSORIES

	DESCRIPTION	CODE
	Stainless steel and rubber waterproof kit (Ø 107x245 mm cable gland included)	IP68APL
	Stainless steel drawn block.	BLOCAPL

For the load cell fixing screws, provide the tightening torque indicated in the table