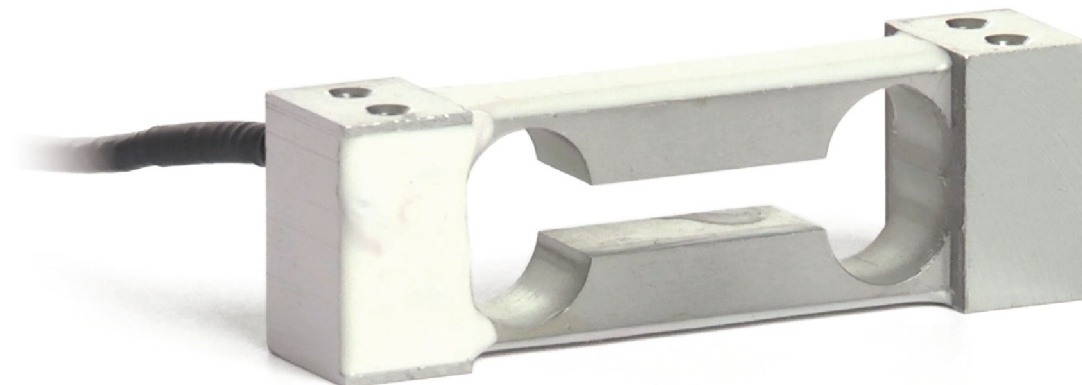




Manufactured according to OIML R60 standards

Capacity from 0.25 kg to 1 kg



- ALUMINUM ALLOY
- COMBINED ERROR  $\leq \pm 0.03\%$
- IP65 PROTECTION RATING

CAPACITY	kg	PLATFORM (mm)	NET WEIGHT (kg)
	0.25	200 x 200	0.1
	0.5	200 x 200	0.1
	1	200 x 200	0.1

### CERTIFICATIONS

- EAC** Complies with the Eurasian Customs Union regulations
- UK CA** Equivalent of the CE marking for the United Kingdom

#### CERTIFICATIONS ON REQUEST

Calibration report

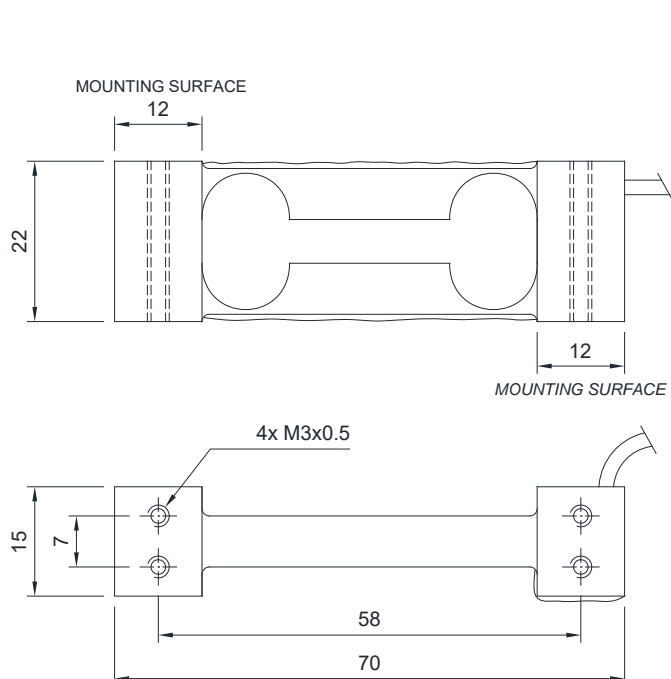
- Ex** ATEX II 1G 2D (zone 0-1-2-21-22) (CE - **UK CA**)

- IECEx** IECEx (zone 0-1-2-20-21-22)

- EAC Ex** Complies with the Eurasian Customs Union regulations for use in potentially explosive atmospheres

- Ex-NEPSY** Complies with Chinese market regulations for use in potentially explosive atmospheres

## DIMENSIONS (mm)



For the load cell fixing screws, provide the tightening torque indicated in the table

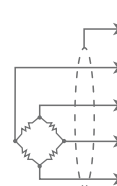
Screw	M3	
Screw class	6.8	8.8
Tightening torque	1 Nm	1.3 Nm

## TECHNICAL FEATURES

Material	Aluminum alloy		
Nominal load (E max)	0.25 - 0.50 - 1.00 kg		
Combined error	$\leq \pm 0.03\%$		
Protection rating	IP65		
Rated output	1 mV/V $\pm 20\%$	Input resistance	410 $\Omega \pm 10$
Temperature effect on zero	0.0025% $^{\circ}\text{C}$	Output resistance	350 $\Omega \pm 3$
Temperature effect on span	0.0025% $^{\circ}\text{C}$	Zero balance	$\pm 2\%$
Compensated temperature range	-10 $^{\circ}\text{C}$ / +40 $^{\circ}\text{C}$	Insulation resistance	>2000 M $\Omega$
Operating temperature range	-20 $^{\circ}\text{C}$ / +60 $^{\circ}\text{C}$	Safe overload (% of full scale)	200%
Creep at nominal load in 30 minutes	0.03%	Ultimate overload (% of full scale)	400%
Max supply voltage without damage	15 V	Deflection at nominal load	0.3 mm

## ELECTRICAL CONNECTIONS

Cable length	3 m
Cable diameter	2.5 mm
Cores	4 x 0.20 mm <sup>2</sup>



SHIELD	
+ SIGNAL	GREEN
+ EXCITATION	RED
- SIGNAL	WHITE
- EXCITATION	BLACK