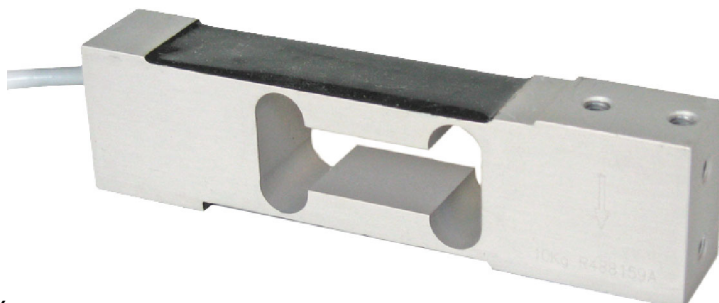


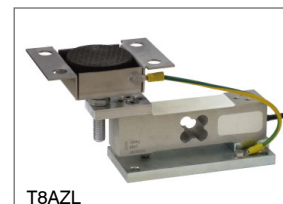


Capacity from 10 kg to 100 kg



- ALUMINUM ALLOY
- COMBINED ERROR $\leq \pm 0.02\%$ (0.017% C4)
- IP65 PROTECTION RATING

MOUNTING KIT



T8AZL

Can be used for systems with at least 3 supports

CAPACITY	kg	ACCURACY CLASS C3	ACCURACY CLASS C4			PLATFORM (mm)	NET WEIGHT (kg)
10		•	—	•	•	400 x 400	0.4
15		•	•	•	•	400 x 400	0.4
20		•	•	•	•	400 x 400	0.4
30		•	•	•	•	400 x 400	0.4
50		•	•	•	•	400 x 400	0.4
100		•	—	•	•	400 x 400	0.4

ON REQUEST

CERTIFICATIONS

- OIML R60 C3
- Complies with the Eurasian Customs Union regulations
- Equivalent of the CE marking for the United Kingdom
- Complies with United Kingdom regulations for legal for trade use

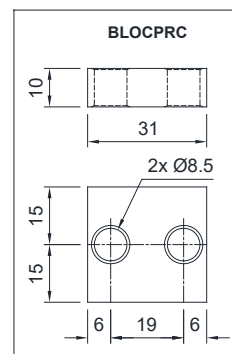
CERTIFICATIONS ON REQUEST

	Calibration report
	ATEX II 1G 2D (zone 0-1-2-21-22) (CE - UK CA)
	IECEx (zone 0-1-2-20-21-22)
	OIML R60 C4
	Complies with the Eurasian Customs Union regulations for use in potentially explosive atmospheres
	Complies with Chinese market regulations for use in potentially explosive atmospheres
	NTEP - Complies with United States regulations for legal for trade use

COMPLEMENTARY ACCESSORIES

	DESCRIPTION	CODE
	Stainless steel drawn block.	BLOCPRC

A diagram of a horizontal beam. A downward-pointing arrow is located on the right side of the beam, representing a point load. On the left side, there is a vertical line representing a support, with an upward-pointing arrow originating from it, representing a reaction force.



Screw	M6	
Screw class	6.8	8.8
Tightening torque	7.5 Nm	10 Nm

Material		Aluminum alloy	
OIML R60 Accuracy class • Verification intervals		C3 • 3000	C4 • 4000
Nominal load (E max)		10 - 15 - 20 - 30 - 50 - 100 kg	15 - 20 - 30 - 50 kg
Minimum verification interval (V min)		E max / 12000	E max / 15000
Combined error		≤ ±0.02%	≤ ±0.017%
Protection rating		IP65	
Rated output	2 mV/V ±10%	Input resistance	409 Ω ±6
Temperature effect on zero	0.0017% °C	Output resistance	350 Ω ±3
Temperature effect on span	0.0014% °C	Zero balance	≤ ±1%
Compensated temperature range	-10 °C / +40 °C	Insulation resistance	≥5000 MΩ
Operating temperature range	-35 °C / +65 °C	Safe overload (% of full scale)	150%
Creep at nominal load in 30 minutes	0.02%	Ultimate overload (% of full scale)	300%
Max supply voltage without damage	18 V	Deflection at nominal load	0.5 mm

Cable length	6 m
Cable diameter	5 mm
Cores	6 x 0.20 mm ²

