



Capacity from 20 klb to 60 klb



- AISI 4340 NICKEL PLATED STEEL
- COMBINED ERROR $\leq \pm 0.02\%$
- IP68 PROTECTION RATING

MOUNTING KIT



VDTX

CAPACITY	kg	ACCURACY CLASS C3		NET WEIGHT (kg)
20klb / 9 ton		•	•	2.7
30klb / 13.6 ton		•	•	7.75
40klb / 18 ton		•	•	7.78
50klb / 23 ton		•	•	8.3
60klb / 27 ton		•	•	8.5

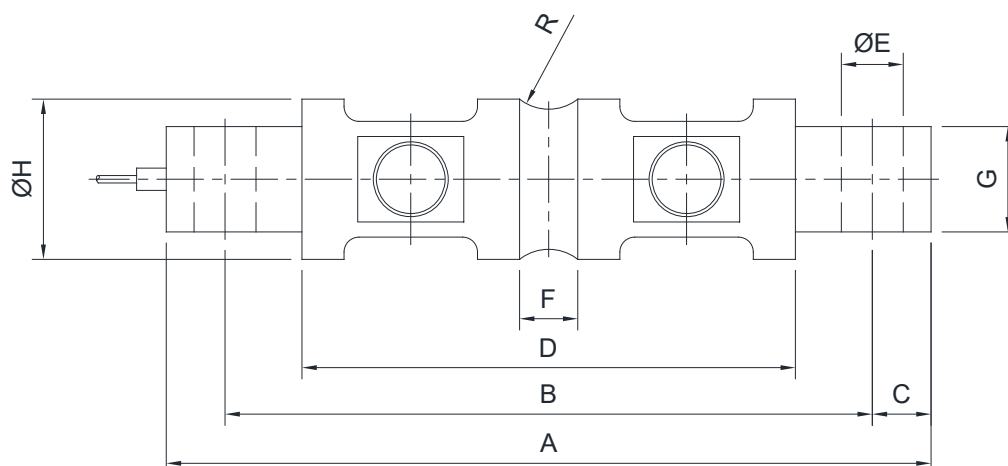
CERTIFICATIONS

- OIML R60 C3
- Complies with the Eurasian Customs Union regulations
- Equivalent of the CE marking for the United Kingdom
- Complies with United Kingdom regulations for legal for trade use

CERTIFICATIONS ON REQUEST

	Calibration report
	LAT Accredia calibration certificate ISO 376 or ASTM E74 for capacities from 1000 kg to 10000 kg
	ATEX II 1G 2D (zone 0-1-2-21-22) ()
	IECEx (zone 0-1-2-20-21-22)
	Complies with the Eurasian Customs Union regulations for use in potentially explosive atmospheres
	FM HazLoc - Complies with the United States and Canada regulations for use in potentially explosive atmospheres
	Complies with Chinese market regulations for use in potentially explosive atmospheres

DIMENSIONS (mm)



	A	B	C	D	ØE	F	G	ØH	R
20 klb	206	174.6	15.7	133	16.7	21.6	28.4	49.5	12.7
30-60 klb	260	215	22.4	165	27	25.7	60.2	76.2	25.4

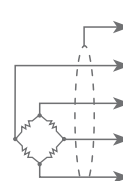
TECHNICAL FEATURES

Material	AISI 4340 nickel plated steel		
OIML R60 Accuracy class • Verification intervals	C3 • 3000		
Nominal load (E max)	20, 30, 40, 50, 60 klb		
Minimum verification interval (V min)	E max / 10000 - E max / 15000		
Combined error	≤ ±0.023%		
Protection rating	IP68		

Rated output	3.0 mV/V ± 0.267%	Input resistance	700 Ω ± 7
Temperature effect on zero	0.002% °C	Output resistance	700 Ω ± 7
Temperature effect on span	0.002% °C	Zero balance	≤ ±1%
Compensated temperature range	-10 °C / +40 °C	Insulation resistance	≥ 5000 MΩ
Operating temperature range	-35 °C / +65 °C	Safe overload (% of full scale)	150%
Creep at nominal load in 30 minutes	0.016%	Ultimate overload (% of full scale)	300%
Max supply voltage without damage	18 V	Deflection at nominal load	0.6 mm

ELECTRICAL CONNECTIONS

Cable length	9 m
Cable diameter	5 mm (20klb) / 8 mm (30klb-60klb)
Cores	4 x 0.22 mm ²



SHIELD	
+ SIGNAL	GREEN
+ EXCITATION	RED
- SIGNAL	WHITE
- EXCITATION	BLACK