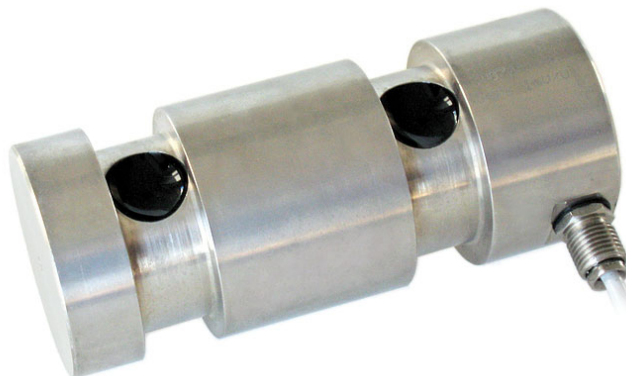




Manufactured according to OIML R60 standards

Capacity from 5000 kg to 20000 kg

- 17-4 PH STAINLESS STEEL
- COMBINED ERROR $\leq \pm 0.1\%$
- IP67 PROTECTION RATING



| CAPACITY | kg | NET WEIGHT (kg) |
|----------|----|-----------------|
| 5000 | | 2.9 |
| 10000 | | 3.2 |
| 20000 | | 3.4 |

CERTIFICATIONS



Complies with the Eurasian Customs Union regulations
Equivalent of the CE marking for the United Kingdom

CERTIFICATIONS ON REQUEST

Calibration report

LAT Accredia calibration certificate ISO 376 or ASTM E74 for capacities from 1000 kg to 10000 kg



ATEX II 1G 2D (zone 0-1-2-21-22) (CE - UKCA)



IECEx (zone 0-1-2-20-21-22)



Complies with the Eurasian Customs Union regulations for use in potentially explosive atmospheres



Complies with Chinese market regulations for use in potentially explosive atmospheres

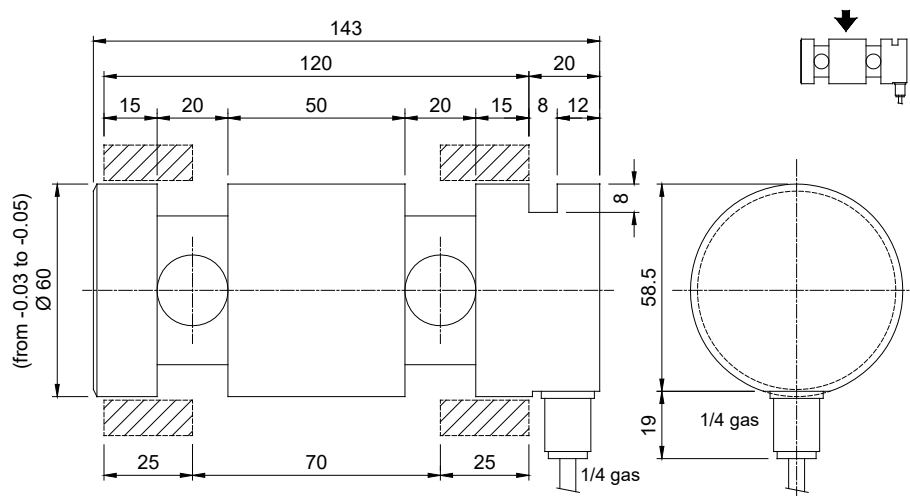
OPTIONS ON REQUEST

DESCRIPTION



Two redundant strain gauges Wheatstone bridges (350 Ω) with two output cables; for dual safety systems

DIMENSIONS (mm)



TECHNICAL FEATURES

| | | | |
|----------------------|-------------------------|--|--|
| Material | 17-4 PH stainless steel | | |
| Nominal load (E max) | 5000 - 10000 - 20000 kg | | |
| Combined error | $\leq \pm 0.1\%$ | | |
| Protection rating | IP67 | | |

| | | | |
|-------------------------------------|---|-------------------------------------|---------------------|
| Rated output | 1 mV/V $\pm 0.1\%$ | Input resistance | 350 $\Omega \pm 20$ |
| Temperature effect on zero | 0.005% $^{\circ}\text{C}$ | Output resistance | 350 $\Omega \pm 5$ |
| Temperature effect on span | 0.005% $^{\circ}\text{C}$ | Zero balance | $\pm 1\%$ |
| Compensated temperature range | -20 $^{\circ}\text{C}$ / +70 $^{\circ}\text{C}$ | Insulation resistance | >5000 M Ω |
| Operating temperature range | -30 $^{\circ}\text{C}$ / +90 $^{\circ}\text{C}$ | Safe overload (% of full scale) | 150% |
| Creep at nominal load in 30 minutes | 0.03% | Ultimate overload (% of full scale) | 400% |
| Max supply voltage without damage | 15 V | Deflection at nominal load | 0.4 mm |

ELECTRICAL CONNECTIONS

| | |
|----------------|--------------------------|
| Cable length | 10 m |
| Cable diameter | 5 mm |
| Cores | 6 x 0.14 mm ² |

