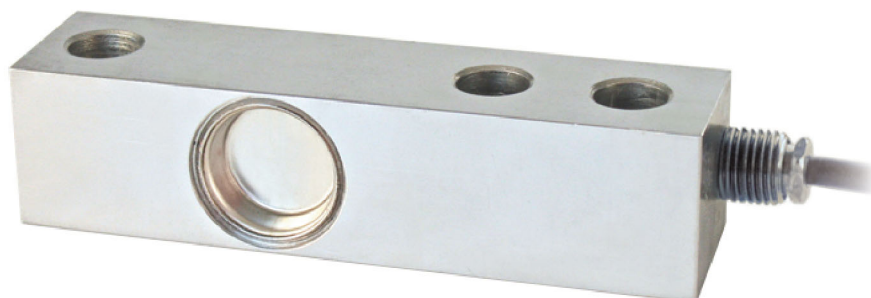


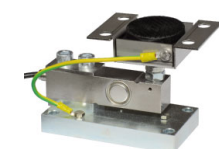


Capacity from 300 kg to 2000 kg

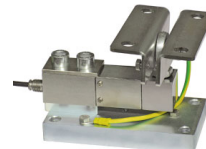


- 17-4 PH STAINLESS STEEL
- COMBINED ERROR $\leq \pm 0.02\%$
- IP68 PROTECTION RATING

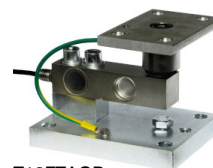
MOUNTING KITS



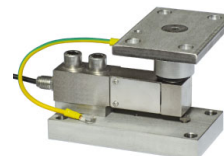
PV - PVZ



TFPS2000 series



T12FTAGP



TF500/2000 series

CAPACITY	kg	ACCURACY CLASS C3		NET WEIGHT (kg)
300		•	•	0.8
500		•	•	0.9
1000		•	•	0.9
2000		•	•	0.9

CERTIFICATIONS



OIML R60 C3



Complies with the Eurasian Customs Union regulations



Equivalent of the CE marking for the United Kingdom



Complies with United Kingdom regulations for legal for trade use

CERTIFICATIONS ON REQUEST



IP69K

Declaration of conformity + IP69K marking protection rating

Water protection in case of high-pressure or steam jet cleaning (test: pressurized water is sprayed from a distance of max 150 mm)

Water pressure: 100 bar; temperature: 80 °C; test duration: 250 seconds (reference standard: DIN 40050-9)

Calibration report

LAT Accredia calibration certificate ISO 376 or ASTM E74 for capacities from 1000 kg to 10000 kg



ATEX II 1G 2D (zone 0-1-2-21-22) (CE - UKCA)



IECEx (zone 0-1-2-20-21-22)

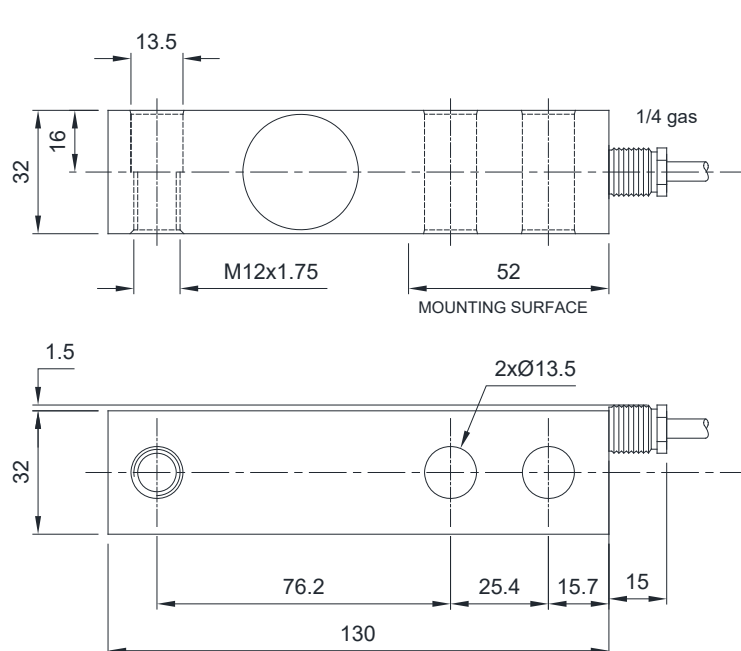


Complies with the Eurasian Customs Union regulations for use in potentially explosive atmospheres



Complies with Chinese market regulations for use in potentially explosive atmospheres

DIMENSIONS (mm)



For the load cell fixing screws, provide the tightening torque indicated in the table

Screw	M12	
Screw class	6.8	8.8
Tightening torque	50 Nm	79 Nm

TECHNICAL FEATURES

Material	17-4 PH stainless steel		
OIML R60 Accuracy class • Verification intervals	C3 • 3000		
Nominal load (E max)	300 - 500 - 1000 - 2000 kg		
Minimum verification interval (V min)	E max / 10000		
Combined error	≤ ±0.02%		
Protection rating	IP68		
Rated output	2 mV/V ±0.4%	Input resistance	385 Ω ±10
Temperature effect on zero	0.002% °C	Output resistance	350 Ω ±3
Temperature effect on span	0.0012% °C	Zero balance	±2%
Compensated temperature range	-10 °C / +40 °C	Insulation resistance	>5000 MΩ
Operating temperature range	-20 °C / +70 °C	Safe overload (% of full scale)	150%
Creep at nominal load in 30 minutes	0.016%	Ultimate overload (% of full scale)	200%
Max supply voltage without damage	15 V	Deflection at nominal load	0.4 mm

ELECTRICAL CONNECTIONS

Cable length	5 m
Cable diameter	5 mm
Cores	6 x 0.25 mm ²

SHIELD	
+ SIGNAL	GREEN
+ EXCITATION + REF./SENSE	RED BLUE
- SIGNAL	WHITE
- EXCITATION - REF./SENSE	BLACK YELLOW