



Manufactured according to OIML R60 standards

**Capacity from 5000 kg to 10000 kg**



- SPECIAL STEEL
- COMBINED ERROR  $\leq \pm 0.1\%$
- IP68 PROTECTION RATING

CAPACITY	kg	NET WEIGHT (kg)
	<b>5000</b>	15.5
	<b>10000</b>	16.2

### CERTIFICATIONS



Complies with the Eurasian Customs Union regulations

Equivalent of the CE marking for the United Kingdom

#### CERTIFICATIONS ON REQUEST

Calibration report

LAT Accredia calibration certificate ISO 376 or ASTM E74 for capacities from 1000 kg to 10000 kg



ATEX II 1G 2D (zone 0-1-2-21-22) (CE - UKCA)



IECEx (zone 0-1-2-20-21-22)

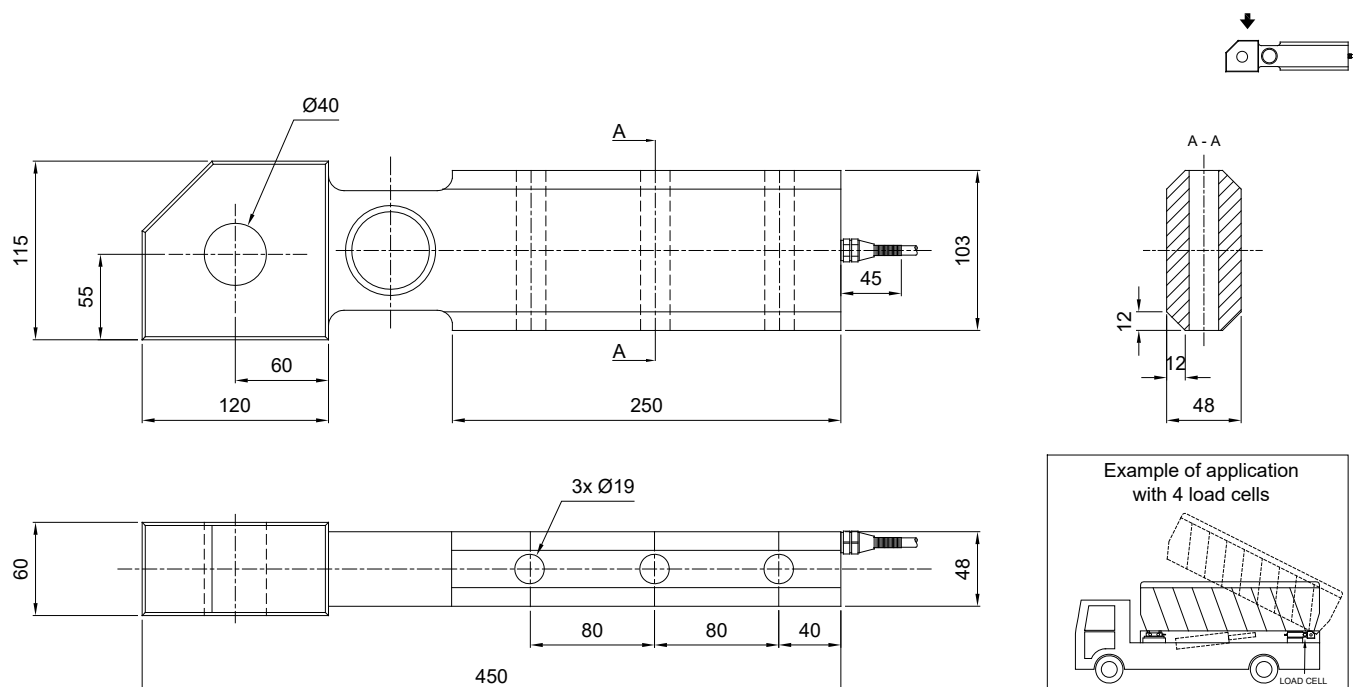


Complies with the Eurasian Customs Union regulations for use in potentially explosive atmospheres



Complies with Chinese market regulations for use in potentially explosive atmospheres

### DIMENSIONS (mm)

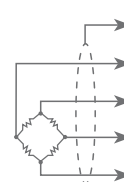


### TECHNICAL FEATURES

Material	Special steel		
Nominal load (E max)	5000 - 10000 kg		
Combined error	$\leq \pm 0.1\%$		
Protection rating	IP68		
Rated output	1 mV/V $\pm 0.5\%$	Input resistance	400 $\Omega \pm 20$
Temperature effect on zero	0.005% $^{\circ}\text{C}$	Output resistance	352 $\Omega \pm 3$
Temperature effect on span	0.005% $^{\circ}\text{C}$	Zero balance	$\pm 2\%$
Compensated temperature range	-10 $^{\circ}\text{C}$ / +40 $^{\circ}\text{C}$	Insulation resistance	>5000 M $\Omega$
Operating temperature range	-30 $^{\circ}\text{C}$ / +70 $^{\circ}\text{C}$	Safe overload (% of full scale)	150%
Creep at nominal load in 30 minutes	0.1%	Ultimate overload (% of full scale)	300%
Max supply voltage without damage	15 V	Deflection at nominal load	0.4 mm

### ELECTRICAL CONNECTIONS

Cable length	10 m
Cable diameter	6 mm
Cores	6 x 0.24 mm <sup>2</sup>



SHIELD	
+ SIGNAL	GREEN
+ EXCITATION	RED
+ REF./SENSE	BLUE
- SIGNAL	WHITE
- EXCITATION	BLACK
- REF./SENSE	YELLOW