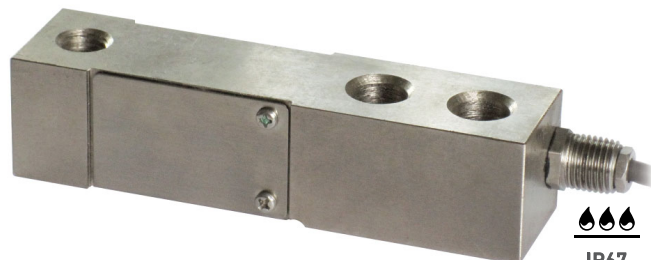




BENDING BEAM: capacity from 75 kg to 300 kg



SHEAR BEAM: capacity from 500 kg to 5000 kg



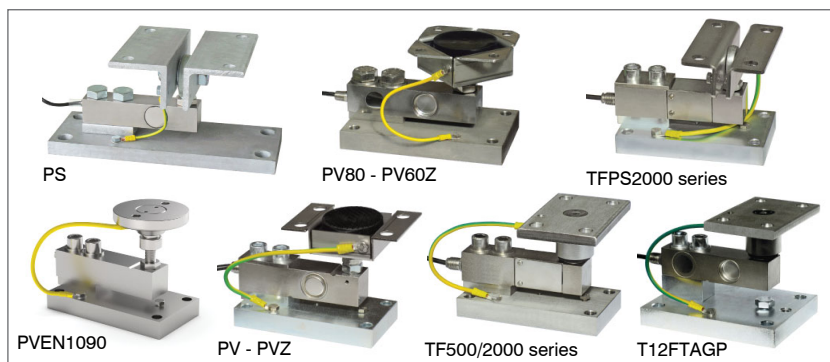
IP67



IP68

MOUNTING KITS

- AISI 4340 NICKEL PLATED STEEL
- COMBINED ERROR $\leq \pm 0.02\%$
- IP67 - IP68 PROTECTION RATING



| CAPACITY | kg | ACCURACY CLASS C3 | | NET WEIGHT (kg) |
|----------|----|----------------------|---|-----------------|
| 75 | | — | — | 1 |
| 150 | | — | — | 1 |
| 300 | | — | — | 1 |
| 500 | | — | — | 1 |
| 1000 | | • | • | 1.1 |
| 2000 | | • | • | 1.1 |
| 3000 | | • | • | 1.1 |
| 5000 | | • | • | 1.1 |

CERTIFICATIONS



OIML R60 C3



Complies with the Eurasian Customs Union regulations



Equivalent of the CE marking for the United Kingdom



Complies with United Kingdom regulations for legal for trade use

CERTIFICATIONS ON REQUEST



Linearity test



ATEX II 1GD (zone 0-1-2-20-21-22) (CE - UKCA)



IECEx (zone 0-1-2-20-21-22)

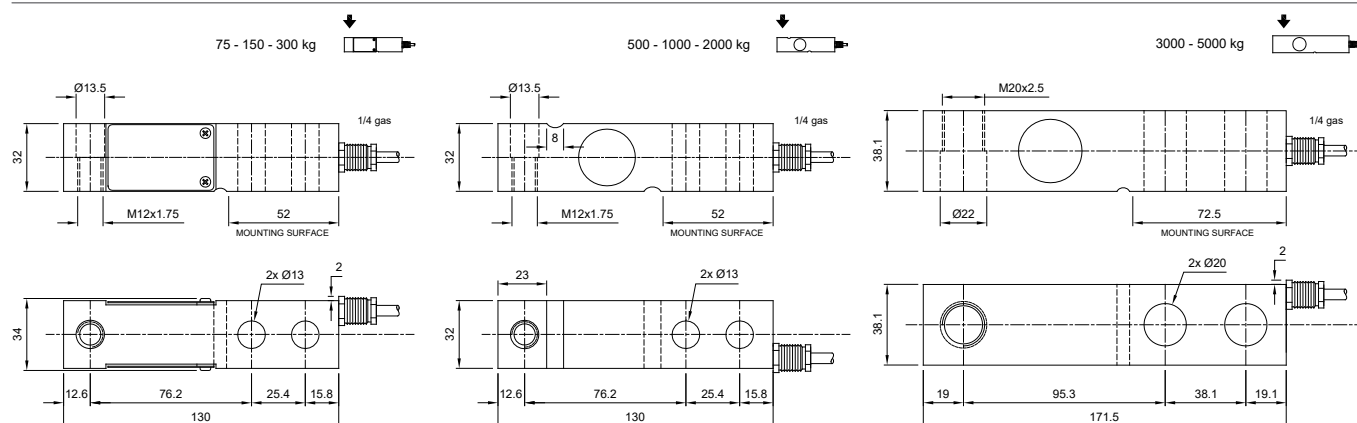


Complies with the Eurasian Customs Union regulations for use in potentially explosive atmospheres



Complies with Chinese market regulations for use in potentially explosive atmospheres

DIMENSIONS (mm)



For the load cell fixing screws, provide the tightening torque indicated in the table

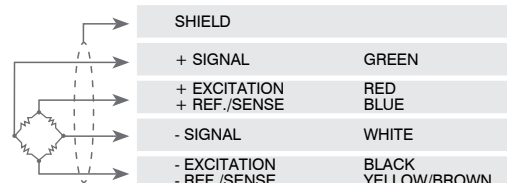
| Screw | M12 | | M20 | |
|-------------------|-------|-------|--------|--------|
| Screw class | 6.8 | 8.8 | 6.8 | 8.8 |
| Tightening torque | 50 Nm | 79 Nm | 290 Nm | 400 Nm |

TECHNICAL FEATURES

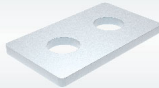
| | | | |
|--|-----------------|--|------------------------------|
| Material | | AISI 4340 nickel plated steel | |
| OIML R60 Accuracy class • Verification intervals | | - | C3 • 3000 |
| Nominal load (E max) | | 75 -150 - 300 - 500 kg | 1000 - 2000 - 3000 - 5000 kg |
| Minimum verification interval (V min) | | - | E max / 12000 |
| Combined error | | ≤ ±0.02% | |
| Protection rating | | IP67 (75 - 300 kg), IP68 (500 - 5000 kg) | |
| | | | |
| Rated output | 2 mV/V ±0.1% | Input resistance | 400 Ω ±10 |
| Temperature effect on zero | 0.002% °C | Output resistance | 352 Ω ±2 |
| Temperature effect on span | 0.0012% °C | Zero balance | ±2% |
| Compensated temperature range | -10 °C / +40 °C | Insulation resistance | ≥5000 MΩ |
| Operating temperature range | -20 °C / +70 °C | Safe overload (% of full scale) | 150% |
| Creep at nominal load in 30 minutes | 0.03% | Ultimate overload (% of full scale) | 250% |
| Max supply voltage without damage | 15 V | Deflection at nominal load | 0.6 mm |

ELECTRICAL CONNECTIONS

| | |
|----------------|--------------------------|
| Cable length | 6 m |
| Cable diameter | 5 mm |
| Cores | 6 x 0.24 mm ² |



COMPLEMENTARY ACCESSORIES

| DESCRIPTION | CODE |
|--|-----------|
|  <p>Special steel block for capacities up to 2000 kg.</p> | PIASTRINO |

The Company reserves the right to make changes to the technical data, drawings and images without notice.