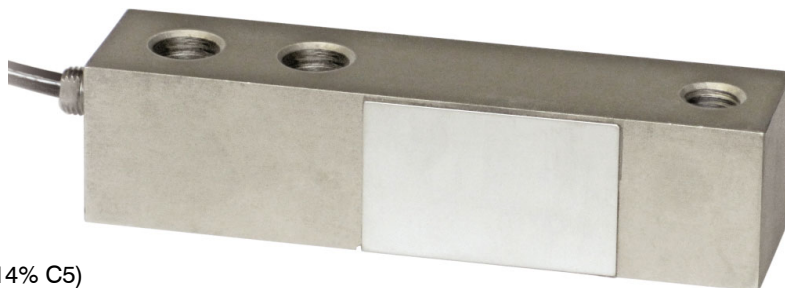


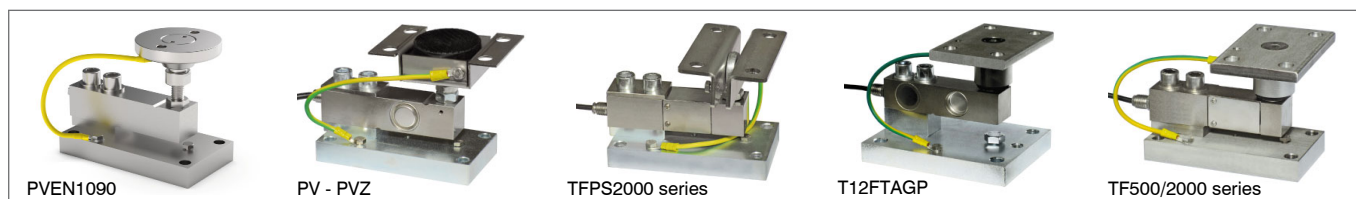


Capacity from 500 kg to 5000 kg



- AISI 4340 NICKEL PLATED STEEL
- COMBINED ERROR $\leq \pm 0.02\%$ (0.017% C4; 0.014% C5)
- IP67 PROTECTION RATING

MOUNTING KITS



| CAPACITY | kg | ACCURACY CLASS | | | | | NET WEIGHT (kg) |
|----------|----|----------------|----|----|---|---|-----------------|
| | | C3 | C4 | C5 | | | |
| 500 | | • | • | • | • | • | 0.8 |
| 1000 | | • | • | • | • | • | 0.8 |
| 1500 | | • | • | • | • | • | 0.9 |
| 2000 | | • | • | • | • | • | 0.9 |
| 3000 | | • | • | • | • | • | 1.7 |
| 5000 | | • | • | • | • | • | 1.7 |

ON REQUEST

CERTIFICATIONS

- OIML R60 C3
- Complies with the Eurasian Customs Union regulations
- Equivalent of the CE marking for the United Kingdom
- Complies with United Kingdom regulations for legal for trade use

CERTIFICATIONS ON REQUEST

| | |
|--|---|
| | Calibration report |
| | LAT Accredia calibration certificate ISO 376 or ASTM E74 for capacities from 1000 kg to 10000 kg |
| | ATEX II 1G 2D (zone 0-1-2-21-22) (CE - UKCA) |
| | IECEx (zone 0-1-2-20-21-22) |
| | OIML R60 C4/C5 |
| | Complies with the Eurasian Customs Union regulations for use in potentially explosive atmospheres |
| | FM HazLoc - Complies with the United States and Canada regulations for use in potentially explosive atmospheres |
| | Complies with Chinese market regulations for use in potentially explosive atmospheres |
| | NTEP - Complies with United States regulations for legal for trade use |

COMPLEMENTARY ACCESSORIES



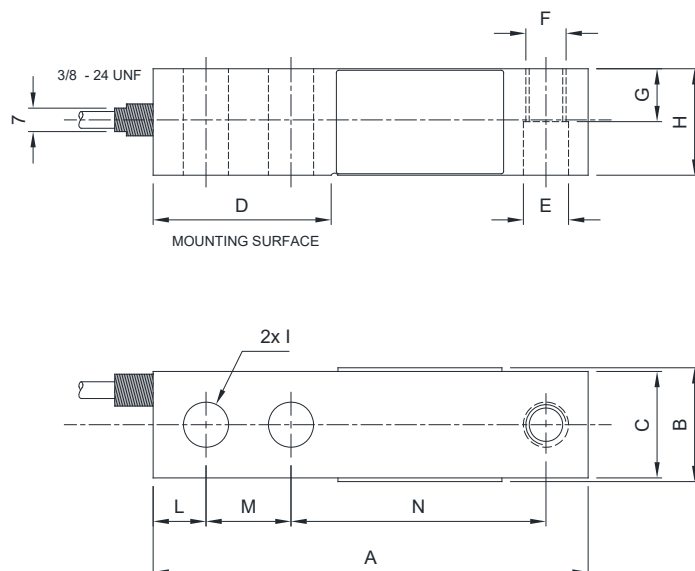
DESCRIPTION

Special steel block
for capacities up to 2000 kg.

CODE

PIASTRINO

DIMENSIONS (mm)



| | 500 kg | 1000 - 1500 2000 kg | 3000 - 5000 kg |
|---|-----------|---------------------------|-------------------|
| A | 130 | 130 | 171.5 |
| B | - | 32.8 | 39.1 |
| C | 31.8 | 31.8 | 38.1 |
| D | 53.2 | 53.2 | 76.2 |
| E | Ø13.5 | Ø13.5 | Ø19.8 |
| F | M12x1.75 | M12x1.75 | M18x1.5 |
| G | 16 | 16 | 19.3 |
| H | 31.8 | 31.8 | 38.1 |
| I | Ø13.5 | Ø13.5 | Ø19.8 |
| L | 15.8 | 15.8 | 19.1 |
| M | 25.4 | 25.4 | 38.1 |
| N | 76.2 | 76.2 | 95.3 |

For the load cell fixing screws, provide the tightening torque indicated in the table

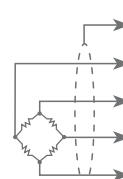
| Screw | M12 | | M18 | |
|-------------------|-------|-------|--------|--------|
| Screw class | 6.8 | 8.8 | 6.8 | 8.8 |
| Tightening torque | 50 Nm | 79 Nm | 205 Nm | 280 Nm |

TECHNICAL FEATURES

| | | | | | |
|--|-----------------|---|---------------|---------------------------------|----------------|
| Material | | AISI 4340 nickel plated steel | | | |
| OIML R60 Accuracy class • Verification intervals | | C3 • 3000 | C4 • 4000 | C5 • 5000 | |
| Nominal load (E max) | | 500 - 1000 - 1500 kg 2000 - 3000 - 5000 kg | | 500 - 1000 kg 1500 - 2000 kg | 3000 - 5000 kg |
| Minimum verification interval (V min) | | E max / 10000 | E max / 15000 | E max / 20000 | E max / 18000 |
| Combined error | | ≤ ±0.02% | ≤ ±0.017% | ≤ ±0.014% | |
| Protection rating | | IP67 | | | |
| | | | | | |
| Rated output | 3 mV/V ±0.1% | Input resistance | | 350 Ω ±3.5 | |
| Temperature effect on zero | 0.0018% °C | Output resistance | | 350 Ω ±3.5 | |
| Temperature effect on span | 0.0014% °C | Zero balance | | ≤ ±1% | |
| Compensated temperature range | -10 °C / +40 °C | Insulation resistance | | ≥ 5000 MΩ | |
| Operating temperature range | -35 °C / +65 °C | Safe overload (% of full scale) | | 150% | |
| Creep at nominal load in 30 minutes | 0.02% | Ultimate overload (% of full scale) | | 300% | |
| Max supply voltage without damage | 18 V | Deflection at nominal load | | 0.4 mm | |

ELECTRICAL CONNECTIONS

| | |
|----------------|---------------------------------------|
| Cable length | 4 m (500-2000 kg); 6 m (3000-5000 kg) |
| Cable diameter | 5 mm |
| Cores | 4 x 0.22 mm² |



| | |
|--------------|-------|
| SHIELD | |
| + SIGNAL | GREEN |
| + EXCITATION | RED |
| - SIGNAL | WHITE |
| - EXCITATION | BLACK |

The Company reserves the right to make changes to the technical data, drawings and images without notice.