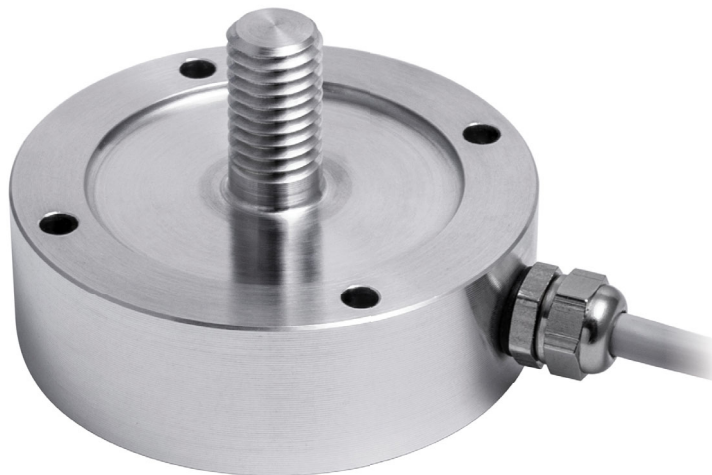




Manufactured according to OIML R60 standards

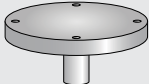
Capacity from 50 kg to 500 kg

- 50-100 kg: ALUMINUM ALLOY (AVIONAL)
- 500 kg: 17-4 PH STAINLESS STEEL
- COMBINED ERROR $\leq \pm 0.05\%$
- IP65 PROTECTION RATING



CAPACITY	kg	NET WEIGHT (kg)
	50	0,15
	100	0,15
	500	0,25

COMPLEMENTARY ACCESSORIES

	DESCRIPTION	CODE
	Lower base	BINFCLBT

CERTIFICATIONS



Complies with the Eurasian Customs Union regulations



Equivalent of the CE marking for the United Kingdom

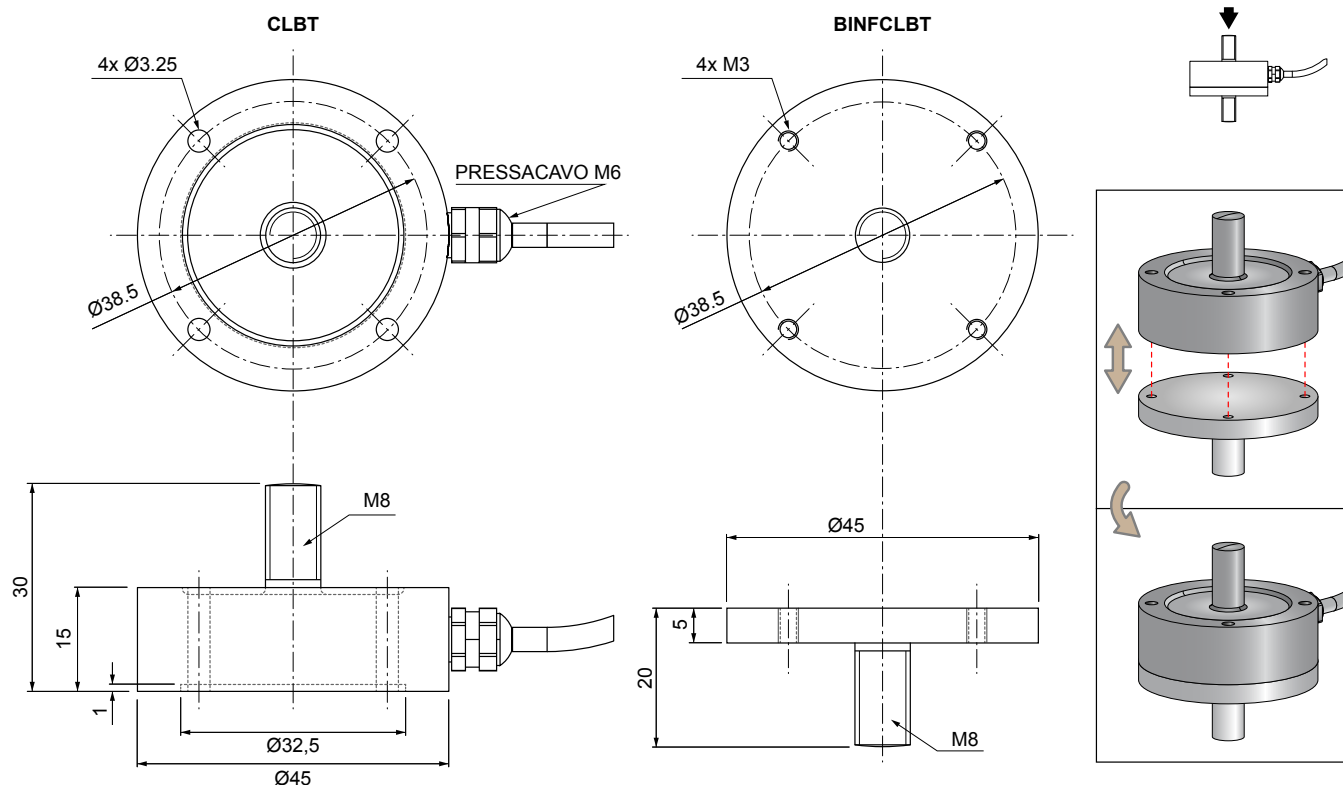
CERTIFICATIONS ON REQUEST

Calibration report



ATEX II 3GD (zone 2-22) (CE - UKCA)

DIMENSIONS (mm)



TECHNICAL FEATURES

Material		Aluminum alloy (Avional)	17-4 PH stainless steel
Nominal load (E max)		50 - 100 kg	500 kg
Combined error		≤ ±0.05%	
Protection rating		IP65	
Rated output	2 mV/V ±10%	Input resistance	700 Ω ±20
Temperature effect on zero	0.005% °C	Output resistance	700 Ω ±5
Temperature effect on span	0.005% °C	Zero balance	±1%
Compensated temperature range	-20 °C / +70 °C	Insulation resistance	>5000 MΩ
Operating temperature range	-30 °C / +90 °C	Safe overload (% of full scale)	150%
Creep at nominal load in 20 minutes	0.03%	Ultimate overload (% of full scale)	300%
Max supply voltage without damage	5÷15 V	Deflection at nominal load	0.3 mm

ELECTRICAL CONNECTIONS

Cable length	5 m
Cable diameter	5 mm
Cores	6 x 0.088 mm ²

SHIELD	
+ SIGNAL	GREEN
+ EXCITATION + REF./SENSE	RED BLUE
- SIGNAL	WHITE
- EXCITATION - REF./SENSE	BLACK BROWN

The Company reserves the right to make changes to the technical data, drawings and images without notice.