

# INSTRUMENT MANAGER

## SOFTWARE FOR MANAGING THE INSTRUMENT PARAMETERS

LAUMAS®

The Instrument Manager software allows you to manage the setting of parameters, updating and monitoring of Laumas weight indicators and weight transmitters from a PC. Refer to the data sheet of the desired instrument to verify its compatibility.

The connection is made between the RS232 or RS485 serial port of Laumas instruments and the PC USB port using a RS232/USB or RS485/USB converter cable.

The software can be used on Windows 7 or higher.



### MAIN FUNCTIONS

#### CONFIGURATIONS

- Through the Instrument Manager, you can create a complete configuration for an instrument by setting the values of all the functional parameters from a PC. You can also create complete configurations for instruments not connected to a PC and send or upload them later.
- By saving the configurations within the software, you will be able to recover them quickly and easily.
- You can compare different configurations and print a summary of the value of all the parameters, highlighting any differences.

#### MONITORING

- Real-time monitoring of the weight read by the instrument to analyze the pattern in relation to setpoint, stability and digital inputs/outputs.
- *For multichannel weight transmitters:* real-time display of the weight distribution on the various load cells connected to the instrument and of the mV values read individually on each channel.

#### REAL CALIBRATION

- Calibration of an instrument through sample weights: the procedure is guided by an interface that shows in real time the weight read by the instrument and any corrections made by the user.
- *For multichannel weight transmitters:* selection of channels and equalization of an instrument in order to standardize the weight when the position on the platform varies. Through the wizard, you can minimize errors during the procedure and display the weight distribution in real time. Through a dedicated interface, you can monitor and manually set the active channels.

#### AUTOMATIC FIRMWARE UPDATE OF THE INSTRUMENT

- The Instrument Manager software allows you to update the firmware of the weighing instrument by automatically downloading from the internet the new firmware distributed by Laumas. In this way, the instruments will always be updated to the latest versions.

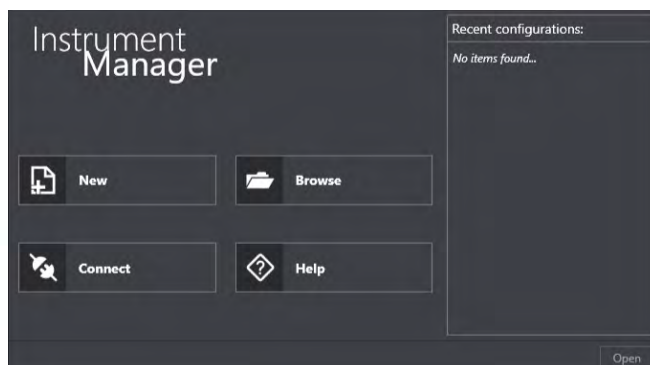
#### QUALIFIED ACCESS TO LEGALLY RELEVANT PARAMETERS

- Instrument Manager allows simple management of legally relevant parameters for approved instruments, keeping them protected from unauthorized access.



Purely indicative image. Refer to the data sheet of the desired instrument to check its compatibility with the Instrument Manager software.

#### WELCOME SCREEN



# INSTRUMENT MANAGER

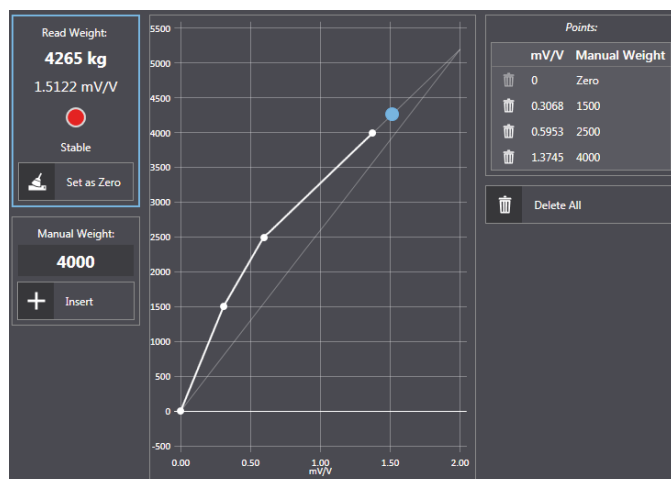
## SOFTWARE FOR MANAGING THE INSTRUMENT PARAMETERS

LAUMAS®

### CONFIGURATIONS

Profile		Instrument	Model	Version	Name	Details	Date	Last Edit
<div>Clear Filters</div>	<div></div>	<div></div>	<div></div>	<div></div>	<div></div>	<div></div>	From <div></div> To <div></div>	From <div></div> To <div></div>
<div><div><div></div><div></div></div></div>	<div>D</div>	Default	TLB	TLB	1.14.0	Second Scale Full Scale = 20kg	6/17/2019 2:22:16 PM	6/17/2019 2:22:16 PM
<div><div><div></div><div></div></div></div>	<div>D</div>	Default	TLB	TLB	1.14.0	TLB Default	6/17/2019 2:22:28 PM	6/17/2019 2:22:28 PM
<div><div><div></div><div></div></div></div>	<div>S</div>	Second Profile	TLB4	TLB4 Powerlink	1.5.0	For PLC	6/17/2019 2:22:45 PM	6/17/2019 2:22:45 PM
<div><div><div></div><div></div></div></div>	<div>S</div>	Second Profile	TLM8			EtherCAT Online	6/17/2019 2:23:01 PM	6/17/2019 2:39:01 PM

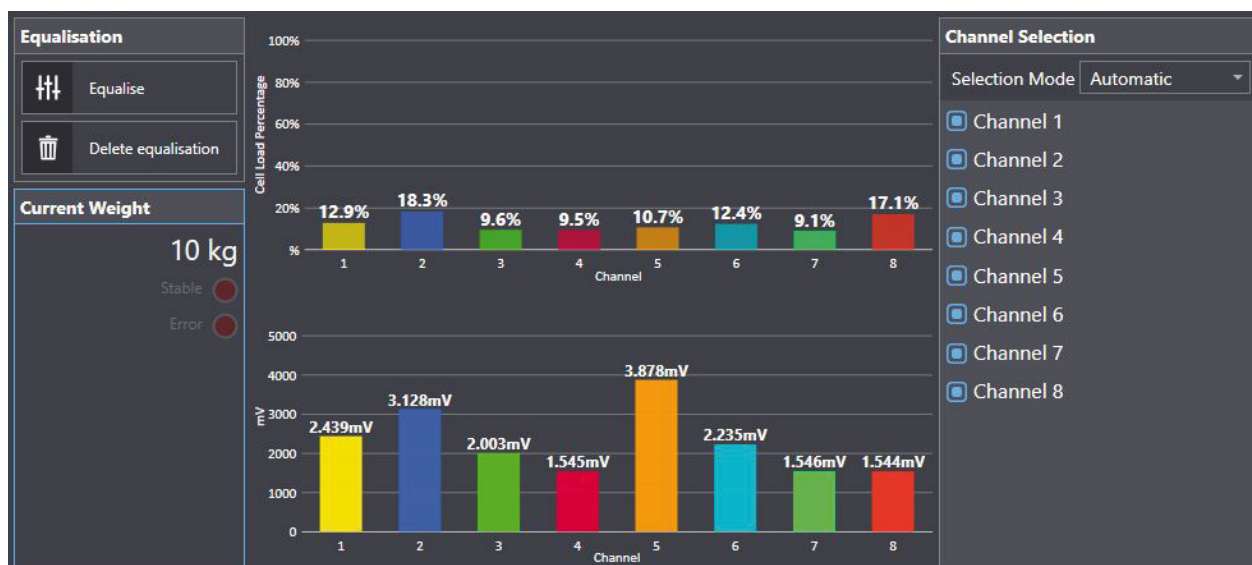
### REAL CALIBRATION



### COMPARE

Configuration 1			Configuration 2	
TLB - Second Scale - Full Scale = 20kg			Connected to TLB4 - Serial Number 625123256	
Show	All	Only Differences	Print	Compare
Tab	Group	Parameter	Configuration 1	Configuration 2
Serial	RS 485	Address	1	1
Calibration	Filter	Anti-Peak	✓	✓
Calibration	Zero Parameters	Auto Zero	0	0
Serial	RS 485	Baud Rate	9600 bps	9600 bps
Serial	RS 485	Stop Bit	1	1
Calibration	Calibration	Coefficient	1	1
Serial	RS 485	Delay	0	0
Calibration	Calibration	Divisions	0.002	1
Calibration	Filter	Filter	4	4
Calibration	Calibration	Theoretical Full Scale	20	0
Serial	RS 485	Hertz	10	10

### MULTICHANNEL



The Company reserves the right to make changes to the technical data, drawings and images without notice.