



Capacity from 250 kg to 100000 kg



- 17-4 PH STAINLESS STEEL
- COMBINED ERROR  $\leq \pm 0.03\%$  (0.02% C3)
- IP68 PROTECTION RATING

### MOUNTING KITS



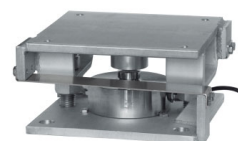
V10000/V10275-EN1090 series



V15000/V100000-EN1090 series



Z10000



Z15000/100000 series

CAPACITY	kg	ACCURACY CLASS				NET WEIGHT (kg)
		C2	C3			
250		—	—	—	—	1.1
500		—	—	—	—	1.1
1000		—	—	—	—	1.1
2500		•	•	•	•	1.1
5000		•	•	•	•	1.1
7500		•	•	•	•	1.1
10000		•	•	•	•	1.1
12500*		—	•	•	•	1.6
15000		—	—	—	—	2.1
30000		—	—	—	—	3.8
50000		—	—	—	—	8.6
100000		—	—	—	—	9.1

ON REQUEST

(\*) Except for the capacity of 12500kg, which is already OIML R60 C3 approved

### CERTIFICATIONS



OIML R60 C2



Complies with the Eurasian Customs Union regulations



Equivalent of the CE marking for the United Kingdom



Complies with United Kingdom regulations for legal for trade use

#### CERTIFICATIONS ON REQUEST



IP69K

Declaration of conformity + IP69K marking protection rating

Water protection in case of high-pressure or steam jet cleaning (test: pressurized water is sprayed from a distance of max 150 mm)  
Water pressure: 100 bar; temperature: 80 °C; test duration: 250 seconds (reference standard: DIN 40050-9)

Calibration report

LAT Accredia calibration certificate ISO 376 or ASTM E74 for capacities from 1000 kg to 10000 kg



ATEX II 1G 2D (zone 0-1-2-21-22) (CE - UKCA)



IECEx (zone 0-1-2-20-21-22)



OIML R60 C3



Complies with the Eurasian Customs Union regulations for use in potentially explosive atmospheres



Complies with Chinese market regulations for use in potentially explosive atmospheres



Complies with the regulations of the Russian Federation for legal for trade use



Complies with Chinese market regulations for legal for trade use

### TECHNICAL FEATURES

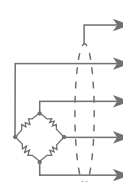
Material	17-4 PH stainless steel		
OIML R60 Accuracy class • Verification intervals	-	C2 • 2000	C3 • 3000
Nominal load (E max)	250 - 500 - 1000 - 15000 kg 30000 - 50000 - 100000 kg	2500 - 5000 kg 7500 - 10000 kg	2500 - 5000 - 7500 kg 10000 - 12500 kg
Minimum verification interval (V min)	-	E max / 15000	E max / 15000
Combined error	≤ ±0.03%	≤ ±0.03%	≤ ±0.02%
Protection rating	IP68		
Rated output	2 mV/V ±0.1%	Input resistance	700 Ω ±10
Temperature effect on zero	0.005% °C	Output resistance	700 Ω ±10
Temperature effect on span	0.003% °C	Zero balance	±1%
Temperature range OIML R60	-10 °C / +40 °C	Insulation resistance	> 10000 MΩ
Compensated temperature range	-20 °C / +70 °C	Safe overload (% of full scale)	150%
Operating temperature range	-30 °C / +90 °C	Ultimate overload (% of full scale)	300%
Creep at nominal load in 30 minutes	0.03%	Deflection at nominal load	0.4 mm
Max supply voltage without damage	15 V		

### ELECTRICAL CONNECTIONS

Cable length	5 m* (250-10000 kg); 10 m (12500-100000 kg)
Cable diameter	5 mm
Cores	6 x 0.14 mm <sup>2</sup>




\*) On request: 10 m long cable version

The OIML R60 C3 approved load cells are equipped with 10 m long cable








SHIELD	
+ SIGNAL	GREEN
+ EXCITATION / REF./SENSE	RED BLUE
- SIGNAL	WHITE
- EXCITATION / REF./SENSE	BLACK YELLOW

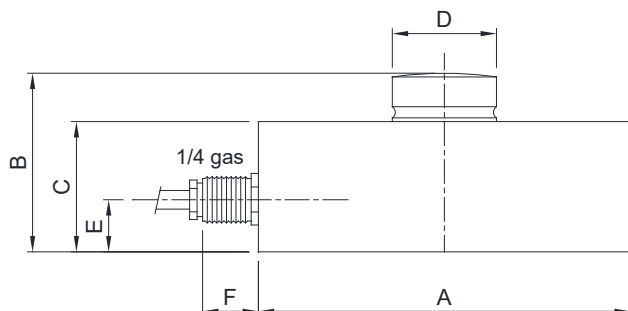
### OPTIONS ON REQUEST

	DESCRIPTION
	10 m long cable version for 250-10000 kg capacities
	AISI 420 stainless steel load cell version (not OIML approved)
	Two redundant strain gauges Wheatstone bridges (350 Ω) with two output cables; for dual safety systems

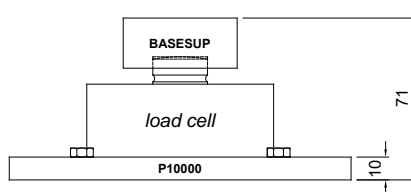
### COMPLEMENTARY ACCESSORIES

	DESCRIPTION		CODE
	AISI 304 stainless steel threaded upper base for compression load cells.	M12x1.75 mm	BASESUPFIL
	AISI 304 stainless steel turned lower base for compression load cells.	Ø110x22 mm Ø140x23 mm Ø180x23 mm	BINF100 BINF126 BINF165
	Lower plate and turned upper base in AISI 304 stainless steel. Load cell capacity: up to 12500 kg.		BASESUP P10000
	Turned upper and lower bases in AISI 304 stainless steel. Load cell capacity: up to 12500 kg.		BASESUP BASEINF
	Lower plate and turned lower base in AISI 304 stainless steel. Load cell capacity: up to 12500 kg.		BASEINF PIASTRA200

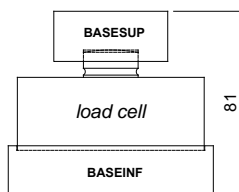
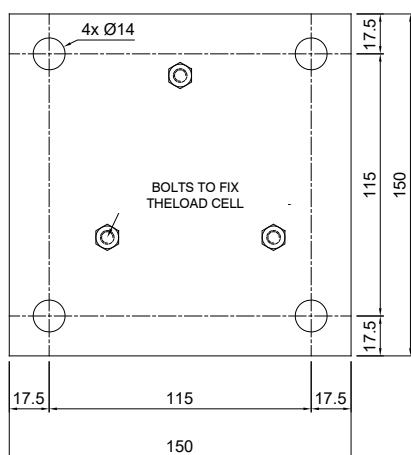
### DIMENSIONS (mm)



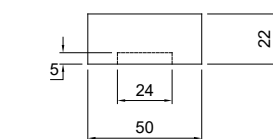
	250			50000
kg	12500	15000	30000	100000
A	Ø82	Ø100	Ø126	Ø164
B	44	48	54	80
C	32	35	40	60
D	Ø22	Ø28	Ø35	Ø60
E	14	14	14	26
F	15	15	15	15



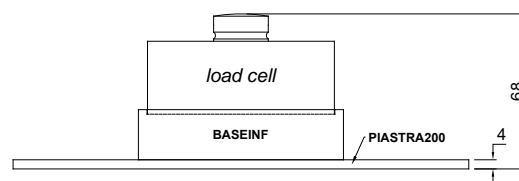
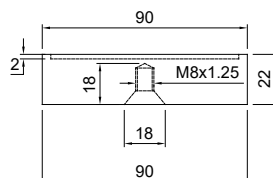
P10000



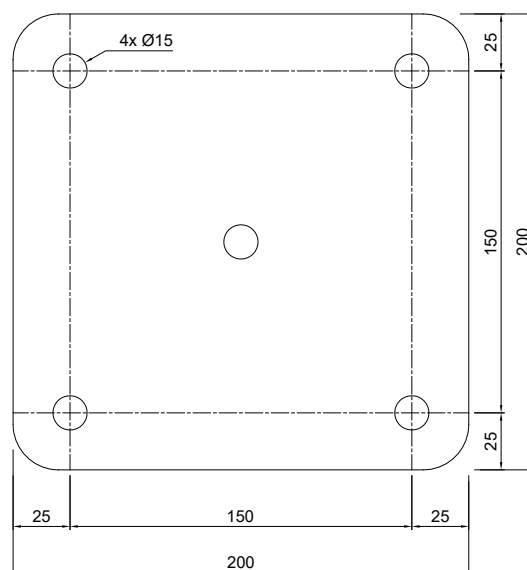
BASESUP



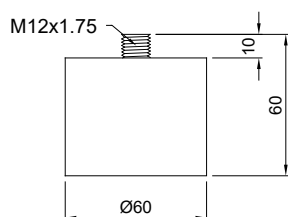
BASEINF



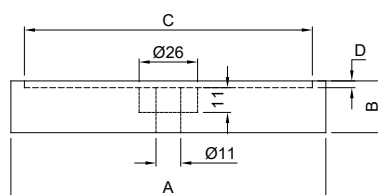
PIASTRA200



BASESUPFIL



BINF



	A	B	C	D
BINF100	Ø110	22	Ø102	2
BINF126	Ø140	23	Ø128	3
BINF165	Ø180	23	Ø167	3